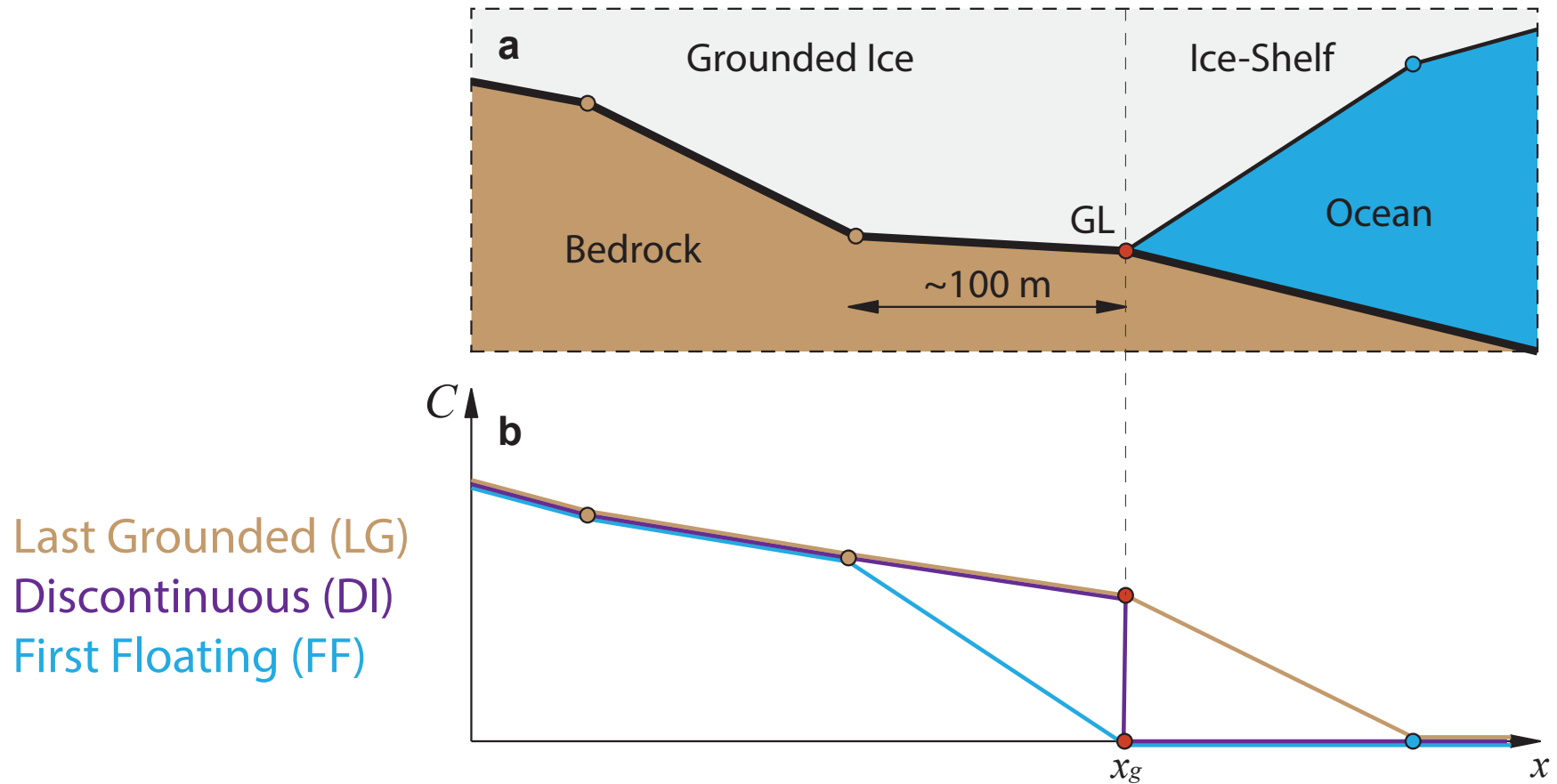


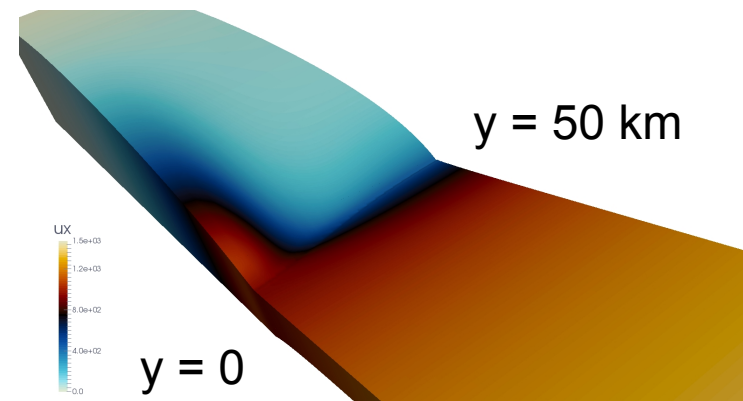
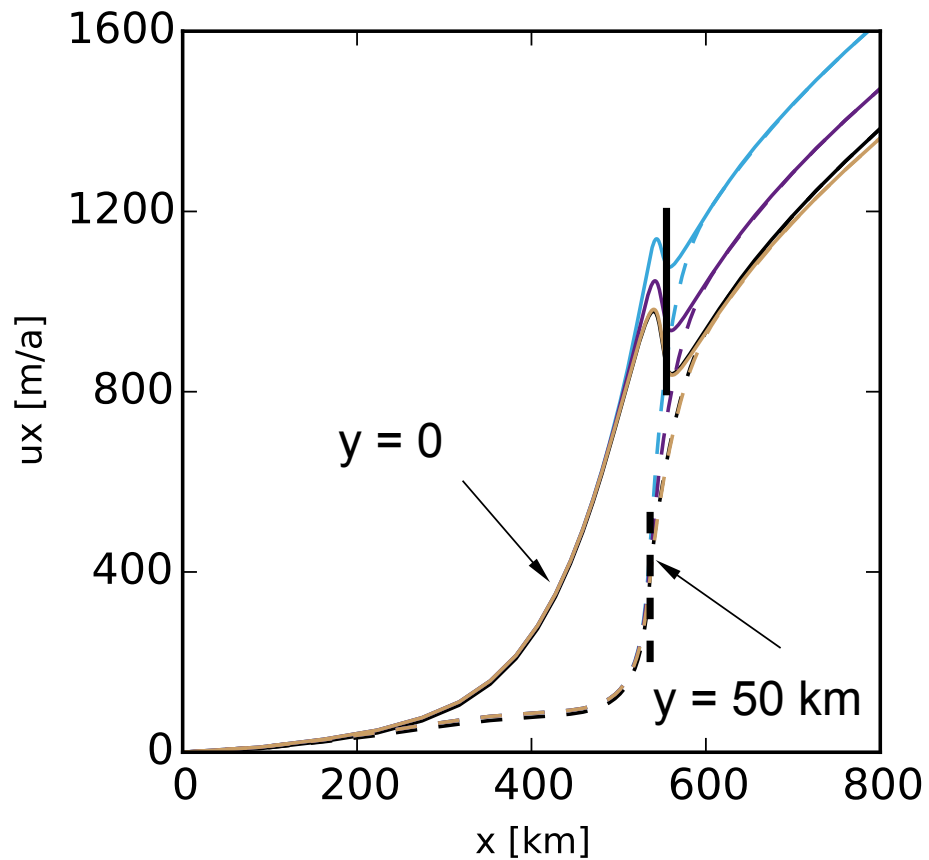
Friction at the GL

Poster Y168: Gagliardini O., J. Brondex, F. Gillet-Chaulet, L. Tavard, V. Peyaud, J. Fuerst, and G. Durand, On the way the friction is applied in the close vicinity of the grounding line in Elmer/Ice



Friction at the GL

Diagnostic MISMIP3d P75D



Last Grounded (LG)
Discontinuous (DI)
First Floating (FF)

Friction at the GL

Transient MISMIP3d P75S/R (incomplete experiments - still running)

