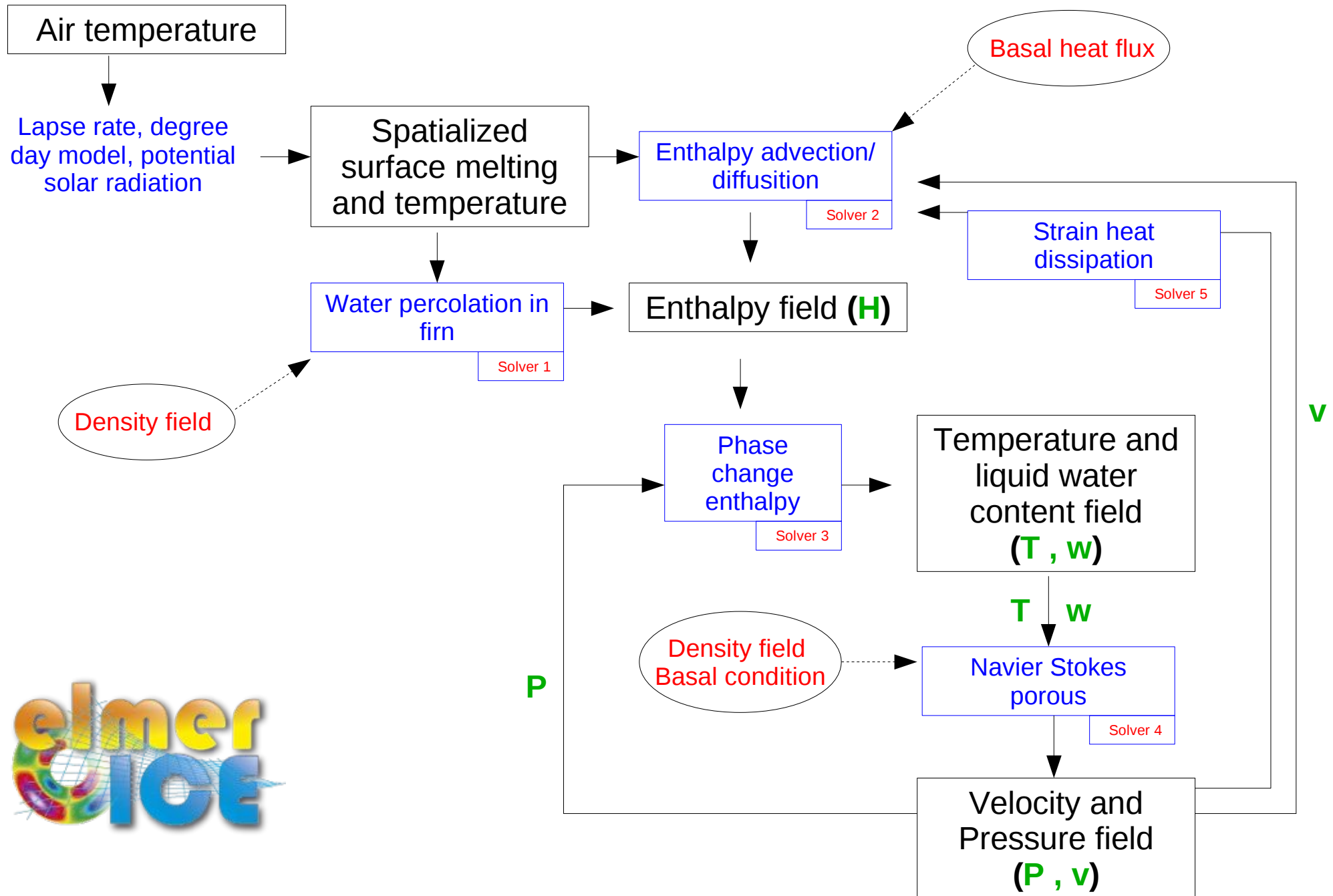
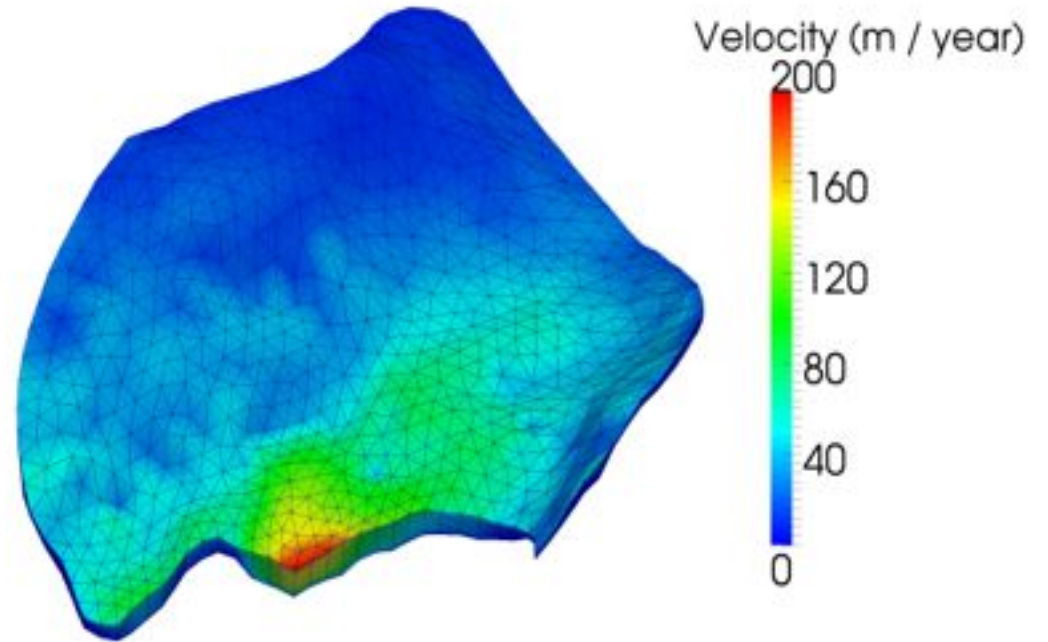
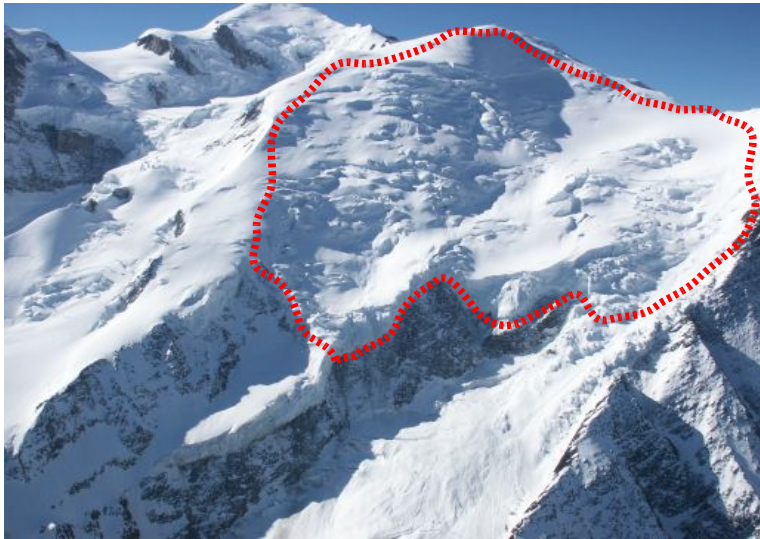


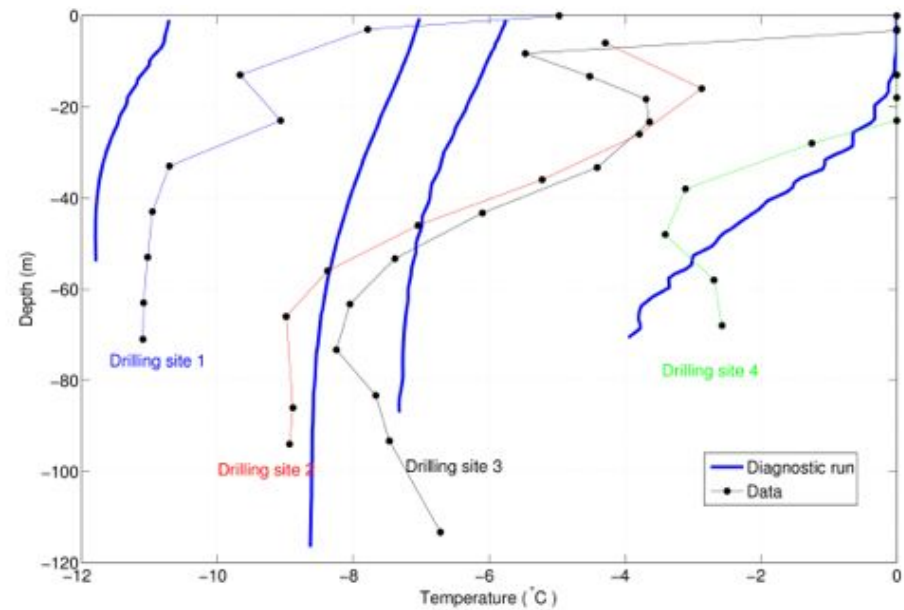
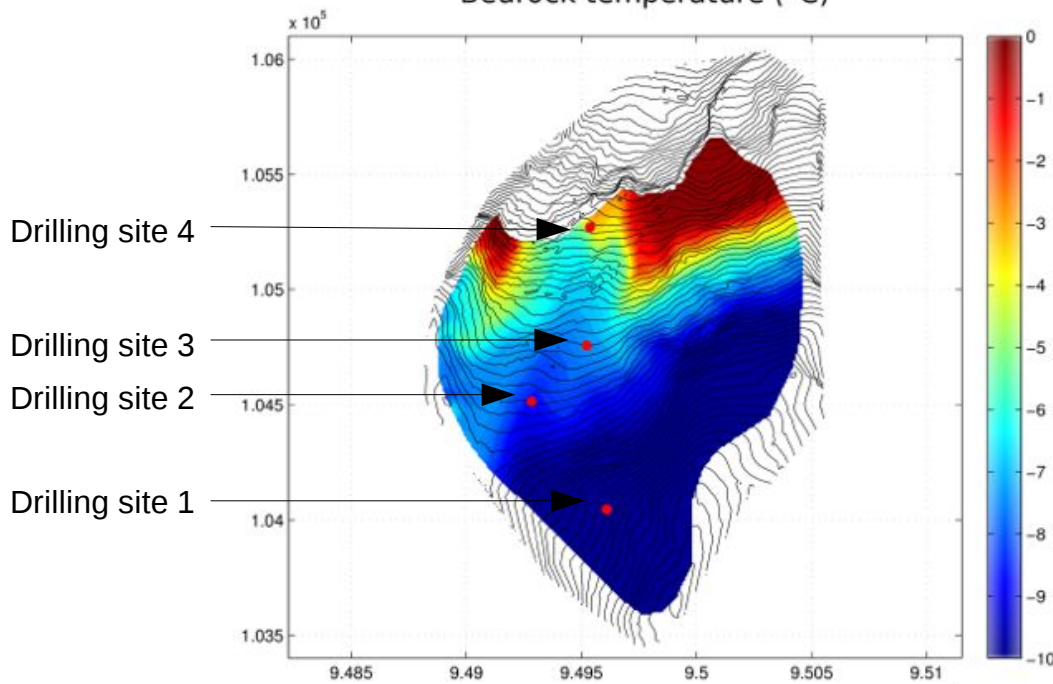
3D polythermal glacier transient modeling using Elmer/Ice:



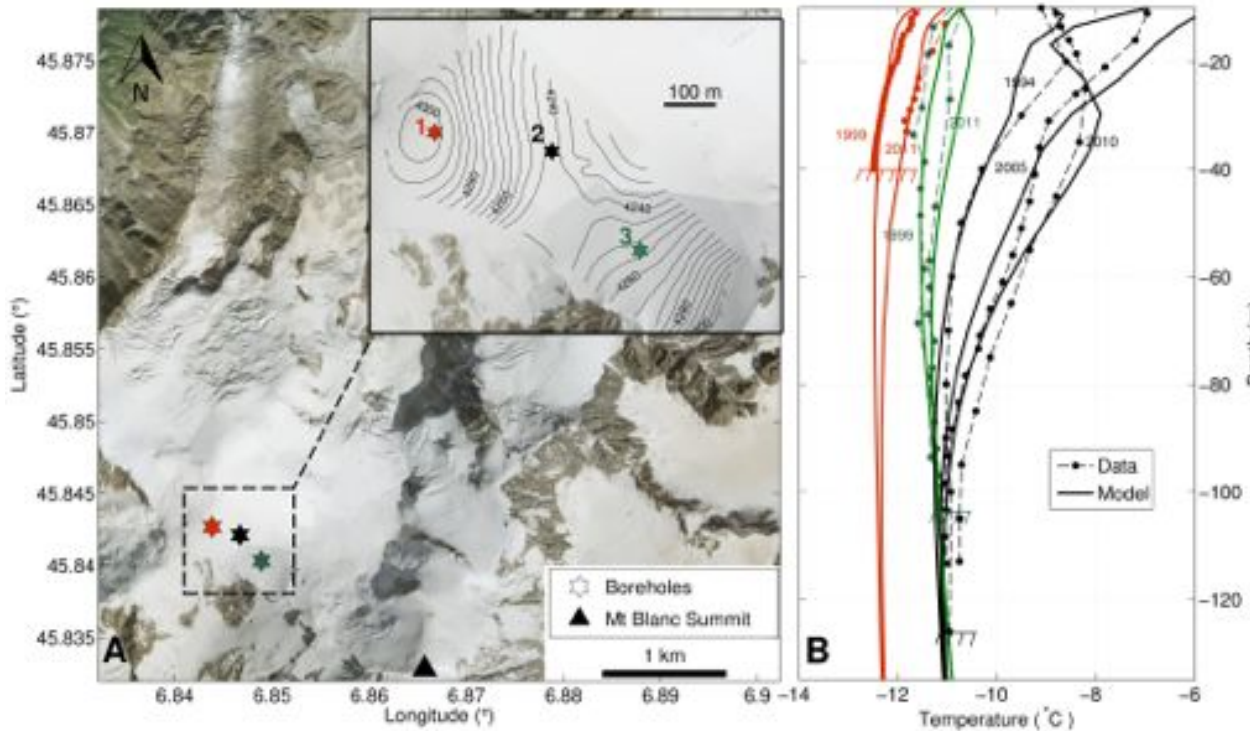
Example 1 : diagnostic run on Taconnaz glacier (Mt Blanc range, France)



Bedrock temperature ($^{\circ}\text{C}$)



Example 2 : Transient run at Col du Dôme (Mt Blanc range, France) over one hundred year (daily time step)



Contact:

Adrien Gilbert
LGGE, Grenoble, France

gilbert@ujf-grenoble.fr

Laboratoire de Glaciologie et Géophysique de l'Environnement

