



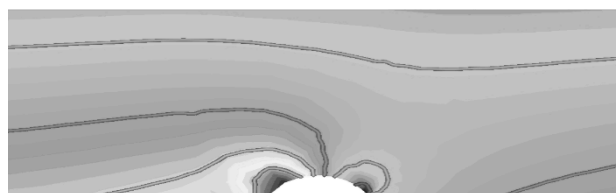
Laboratoire de Glaciologie et Géophysique de l'Environnement



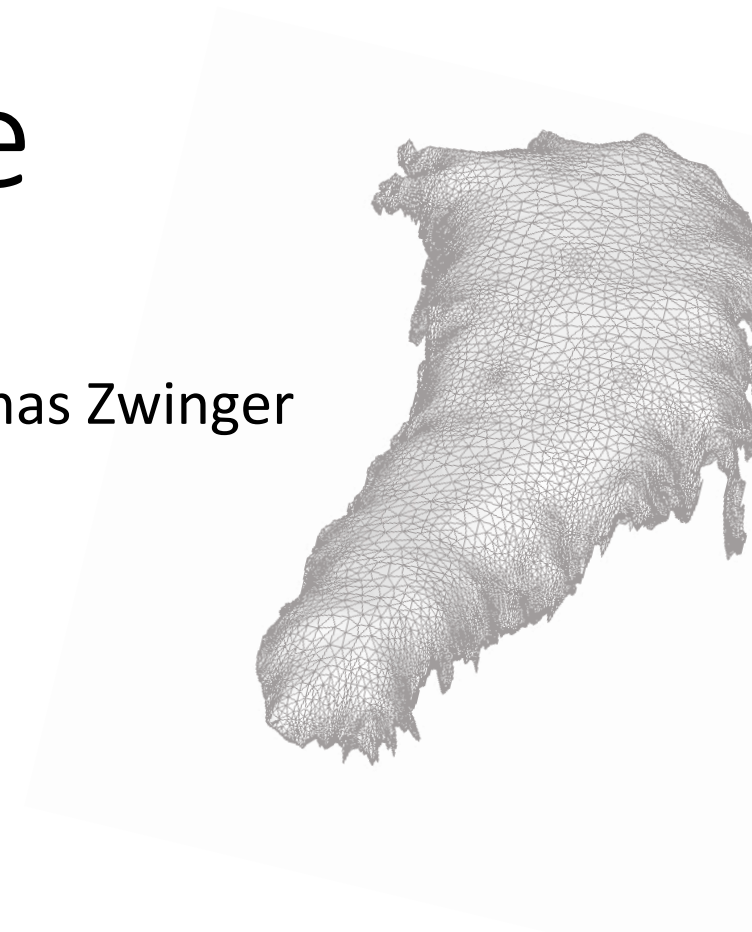
Elmer/Ice Basic Course

IMO, Reykjavík, Iceland

Presenters: Olivier Gagliardini and Thomas Zwinger



0 0.25 0.5 0.75 1 1.25 1.5
Pressure



Program

- **1st day, Monday October 27**

- 9:00 – 9:15 Welcome by Tómas Johannesson (IMO), general announcements, round robin
- 9:15 – 9:45 Introduction Elmer/Ice (the Elmer/Ice eco-system, examples of applications)
- 9:45 – 10:00 Coffee
- 10:00 – 12:00 Basic elements of glacier modelling in Elmer/Ice using a toy flow-line model – part 1 (simple meshing, a basic diagnostic run, general concept of boundary conditions)
- 12:00 – 13:00 Lunch (on own expenses)
- 13:00 – 14:30 Basic elements of glacier modelling in Elmer/Ice using a toy flow-line model – part 2 (thermo-mechanical coupling, sliding)
- 14:30 – 15:00 Coffee
- 15:00 – 17:00 Basic elements of glacier modelling in Elmer/Ice – part 3 (diagnostic runs, deforming meshes, how to couple to a SMB)
- 19:00 - ?? Dinner (on own expenses) – Tómas was so nice to make a reservation

Program

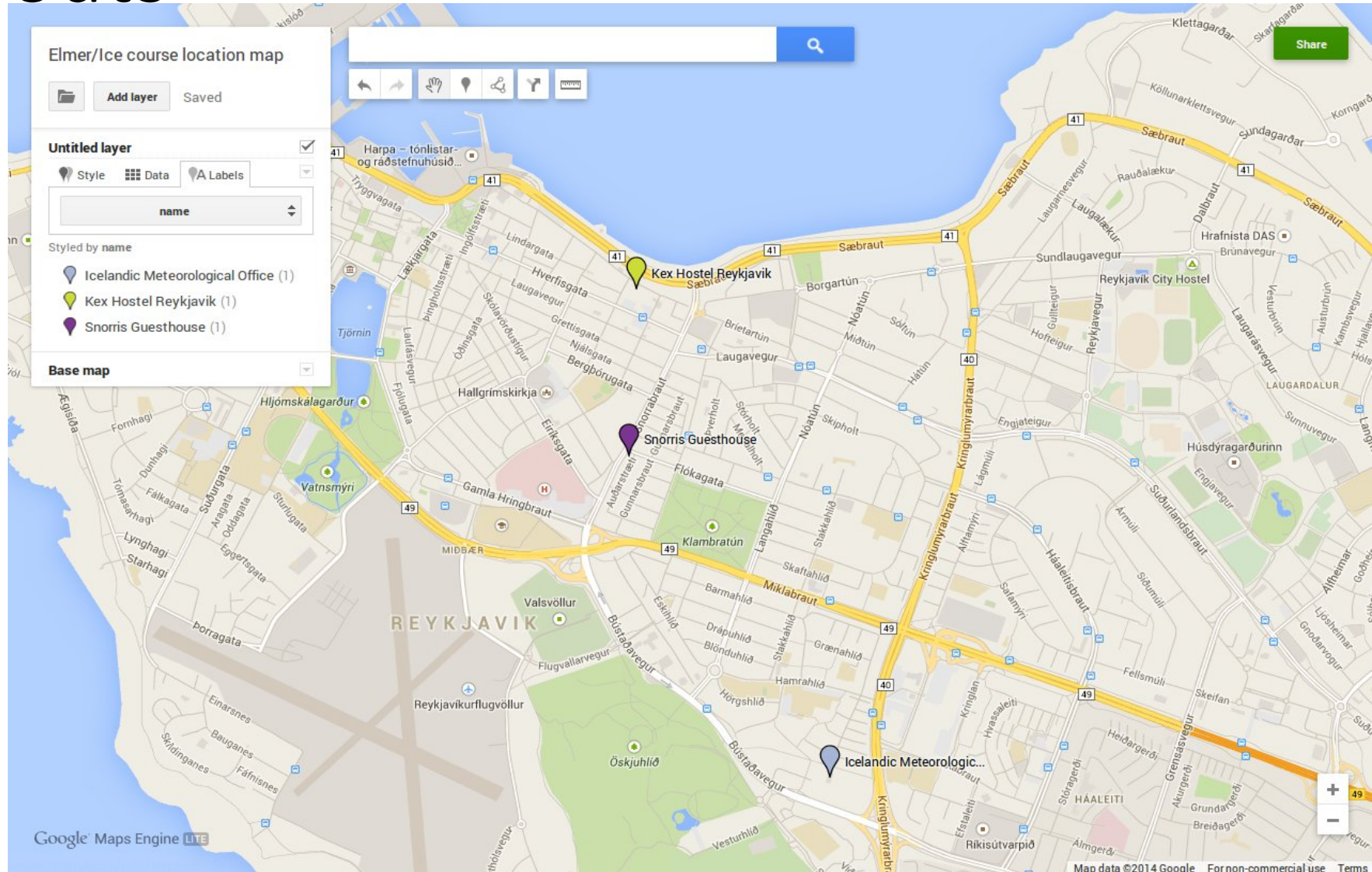
- **2nd day, Tuesday October 28**

- 9:00 – 10:00 Real world glaciological modelling in Elmer/Ice: Tête Rouse
- 10:00 – 10:15 Using User Defined Functions in Elmer/Ice
- 10:15 – 10:30 Coffee
- 10:30 – 11:00 Tête Rouse Setup
- 11:00 – 12:00 Tête Rouse diagnostic
- 12:00 – 13:00 Lunch (on own expenses)
- 13:00 – 14:30 Tête Rouse prognostic
- 14:30 – 15:00 Coffee
- 15:00 – end Do your own stuff and ask a lot of questions

Program

- **3rd day, Wednesday October 29**
- Tómas was so nice to extend the reservation of the room for those who will not participate in the SVALI annual meeting. Olivier Gagliardini will be at place and help you with your own Elmer/Ice related simulation.

Whereabouts



Participants

Edwards	Laura	Lecturer in Remote Sensing and GIS Geography at the University of Manchester
Goel	Vikram	PhD student at the Norwegian Polar Institute
Gong	Cheng	Ph.D student in the Department of Information Technology, Uppsala University, Sweden
Gowan	Evan	Post doc at the Stockholm University in Nina Kirchner's group
Hannesdóttir	Hrafnhildur	PhD student at the University of Iceland
Haubner	Konstanze	PhD student of Jason Box at GEUS
Johannesson	Tomas	IMO
Lea	James	Postdoctoral Researcher in Glaciology at the Stockholm University
Lefevre	Pierre-Marie	PhD student at the University of Oslo
Li	Yemeng	Beijing Normal University
Licciulli	Carlo	PHD student in the Group of Dietmar Wagenbach in Heidelberg
Licul	Aleksandar	PhD student at the University of Lausanne
Oleary	Martin	Postdoc at Swansea University
Patton	Henry	Postdoc at the University of Tromsø
Pramanik	Ankit	PhD student at the Norwegian Polar Institute
Reerink	Thomas	Modeller at IMAU
Reid	Kate	PhD student for John Woodward at the Northumbria University
Ryan	Jonathan	PhD student at Aberystwyth University (supervised by Prof. Alun Hubbard)
Sori	Michael	
Vallot	Dorothee	PhD student at the Uppsala University
Zhao	Liyn	Junior scientists at Beijing Normal University