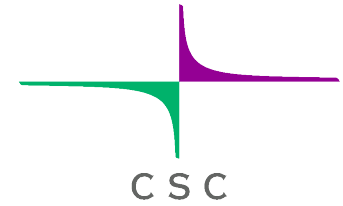




Laboratoire de Glaciologie et Géophysique de l'Environnement



# A real world application

## Tête Rousse Glacier

Olivier GAGLIARDINI

LGGE - Grenoble - France

# Tête Rouse Glacier

---

## ✓ Context

- The history of Tête Rouse Glacier
- The 2010 water filled-cavity
- Analysis of the cavity roof stability (Autumn 2010)

## ✓ Step 1

- Tête Rouse Glacier flow without a water filled-cavity (diagnostic)

## ✓ Step 2

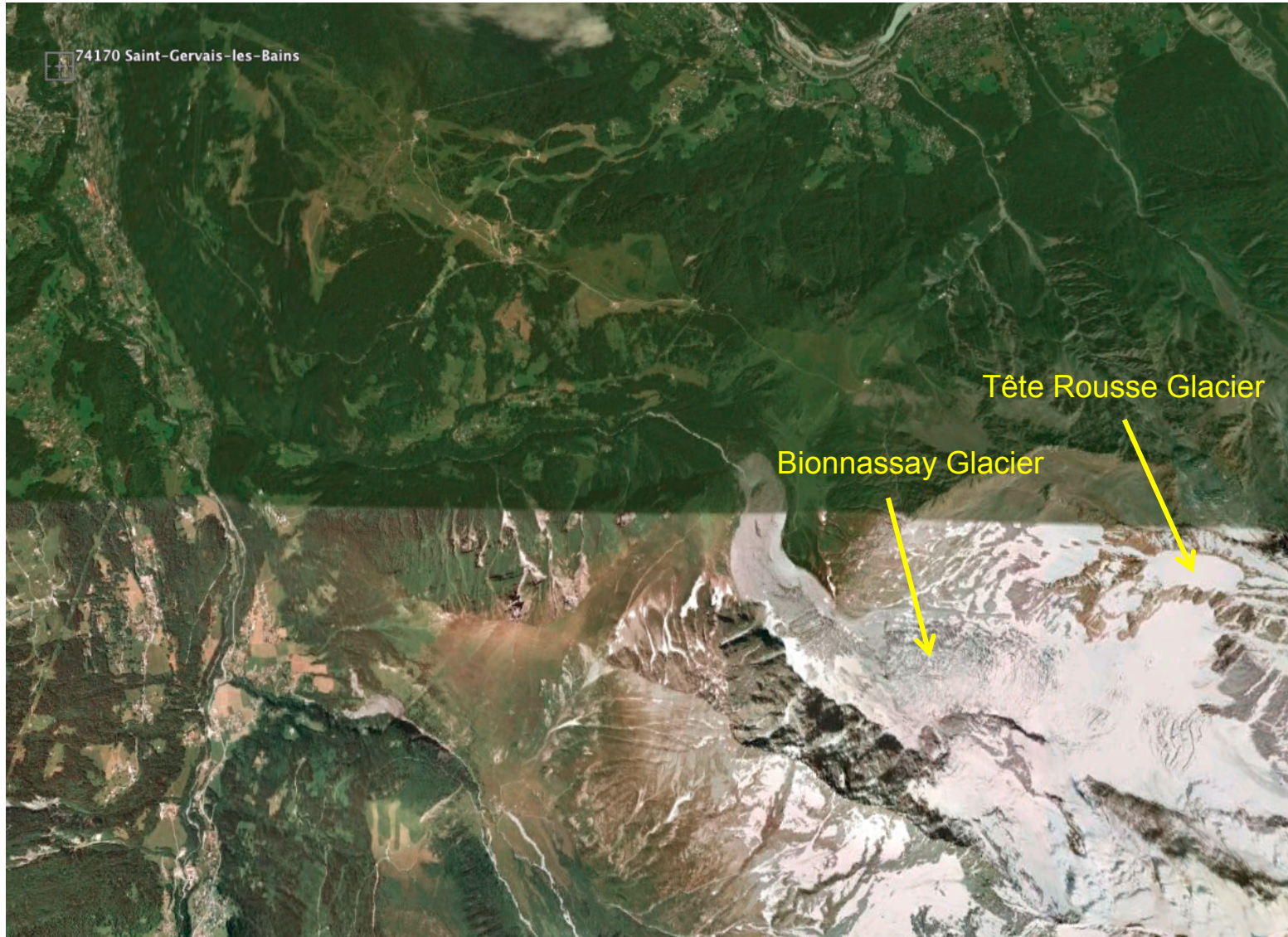
- Influence of an empty cavity below Tête Rouse Glacier (diagnostic)

## ✓ Step 3

- Rate of closure of the cavity for a given drainage scenario (prognostic)

# Location (Mont Blanc Area, France Alps)

---



# Location (Mont Blanc Area, France Alps)

---

Tête Rousse glacier  
3100 to 3300 m  
0.08 km<sup>2</sup> (2007)



# Chronology

---

## The Past History – The 1892 catastrophe

### Contemporary history:

2007-10 - Studies to answer the question about the necessity to maintain the tunnel

07/2010 - A water filled cavity under pressure is discovered

- Crisis – Artificial drainage

2011 - Small research program to understand the formation of the cavity

- New crisis – Artificial drainage

2012 - New Artificial drainage needed

# The 1892 catastrophe

11 July 1892

175 fatalities

100 000 m<sup>3</sup> of water

Flood produced

800 000 m<sup>3</sup> of sediment

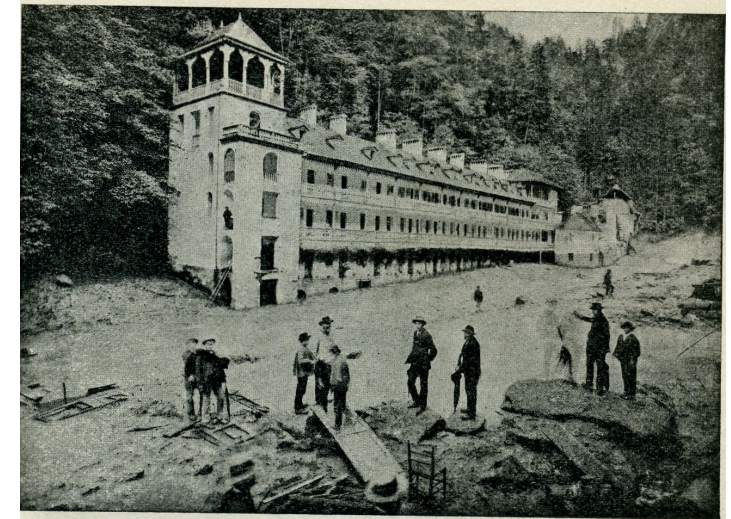
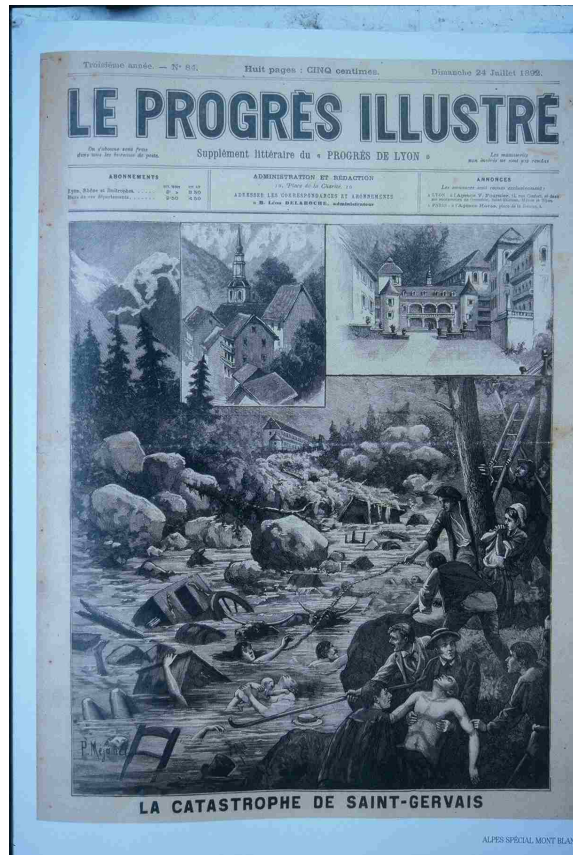
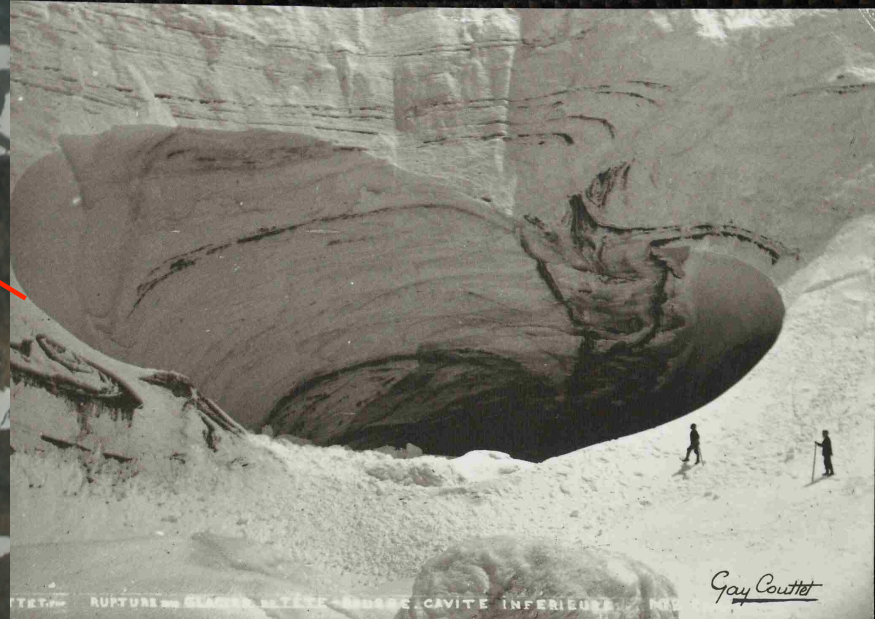
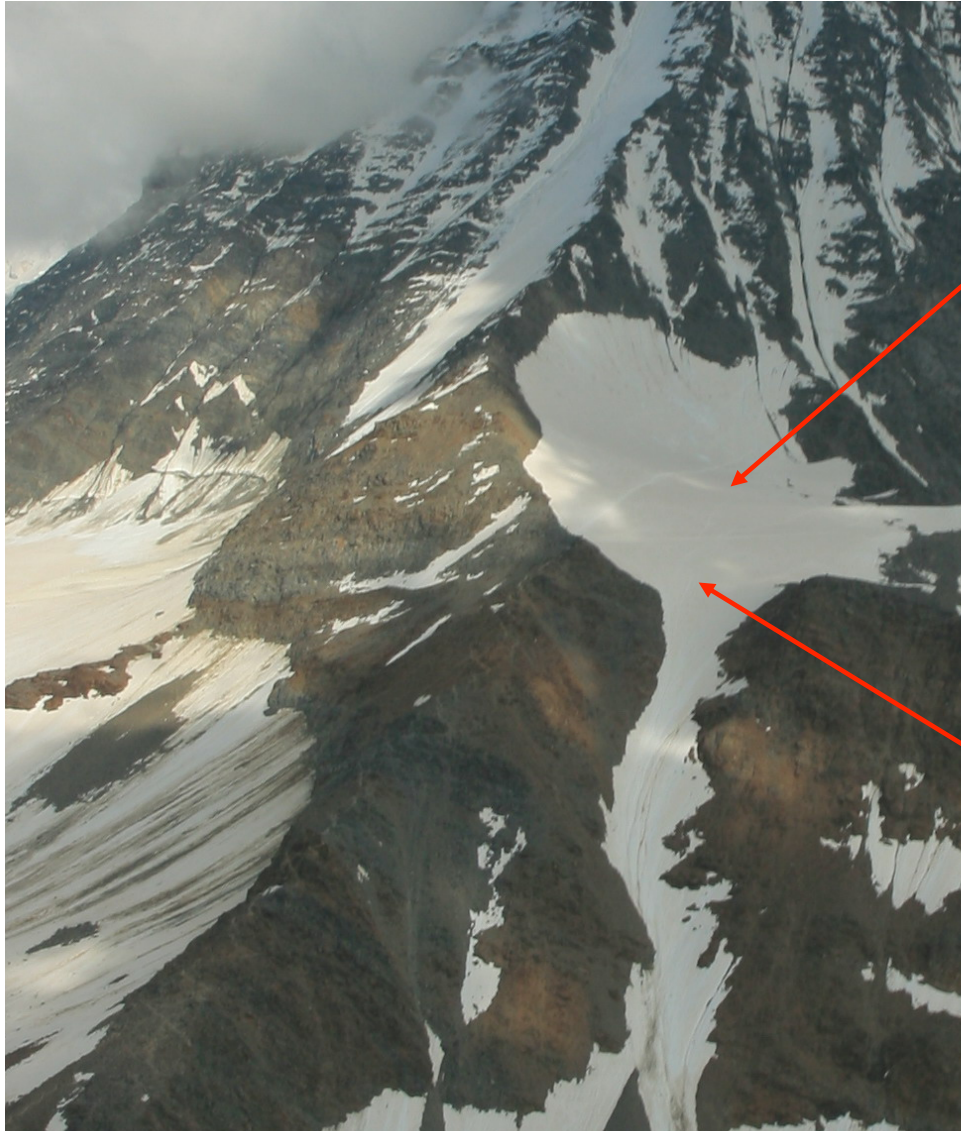


Fig. 22. — Le pont de la route départementale n° 4 tourné et submergé par la lave.  
13 juillet 1892. — Cliché Kuss.

@Vincent, LGGE

# The 1892 catastrophe



# Is there still a risk at Tête Rousse ?

---



@Vincent, LGGE



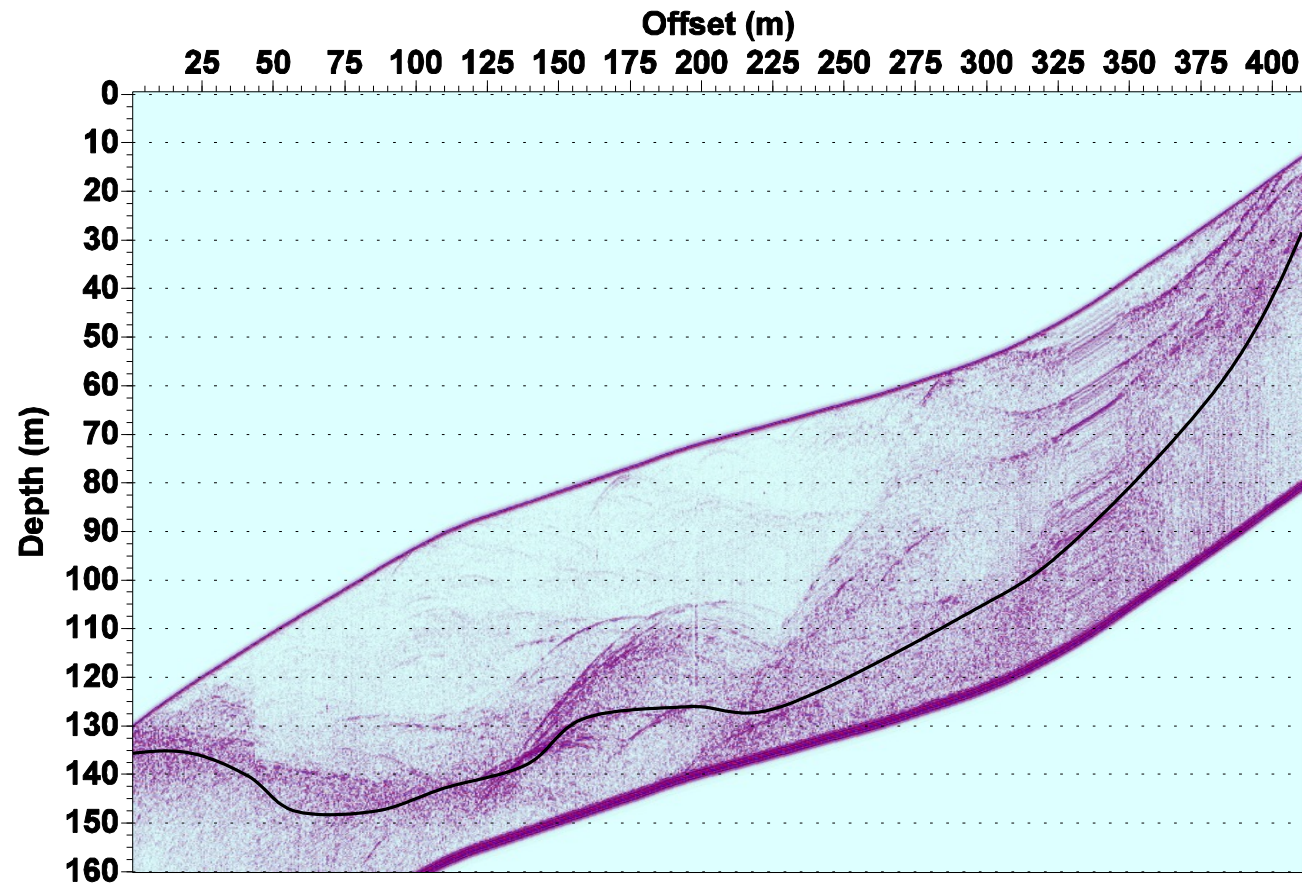
# Glaciological studies

- . Topographic measurements
- . Radar measurements
- . Temperature measurements
- . Mass balance measurements



@Vincent, LGGE

# Glaciological studies



@Vincent, LGGE

The radar measurements showed a zone (volume) with an anomaly.

# Glaciological studies

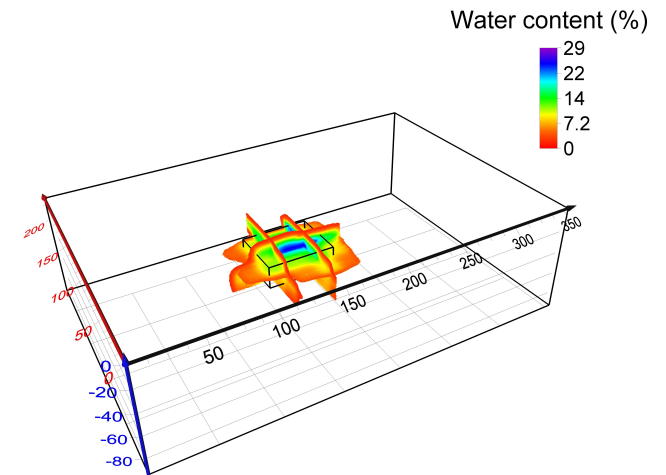
---

In Sept 2009, geophysical survey using the  
Magnetic Resonance Imaging (LTHE, Grenoble)



@Vincent, LGGE

# Glaciological studies

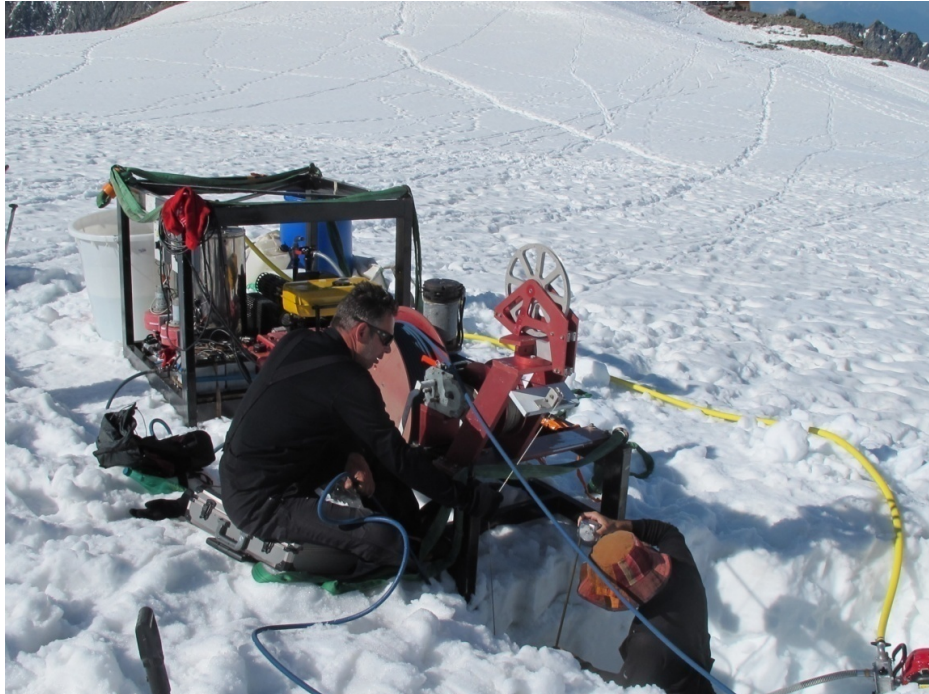


Water volume of 65 000 m<sup>3</sup>

Report presented to public authorities in March 2010

@Vincent, LGGE

# Pressure measurements



20 hot-water drillings performed from 29 June to 8 July 2010

Confirm the presence of a cavity  
and that

**the cavity is under pressure!**



# Decisions

---

The hydrostatic pressure exceeded the ice pressure due to the weight of the ice column

We could expect that the water contained in the glacier would be released suddenly

The public authorities have been warned immediately (13 July, 2010)

It has been decided to drain the subglacial lake as soon as possible, because 3000 people were threatened in the valley.

# A difficult field work



# Drainage of the cavity

---



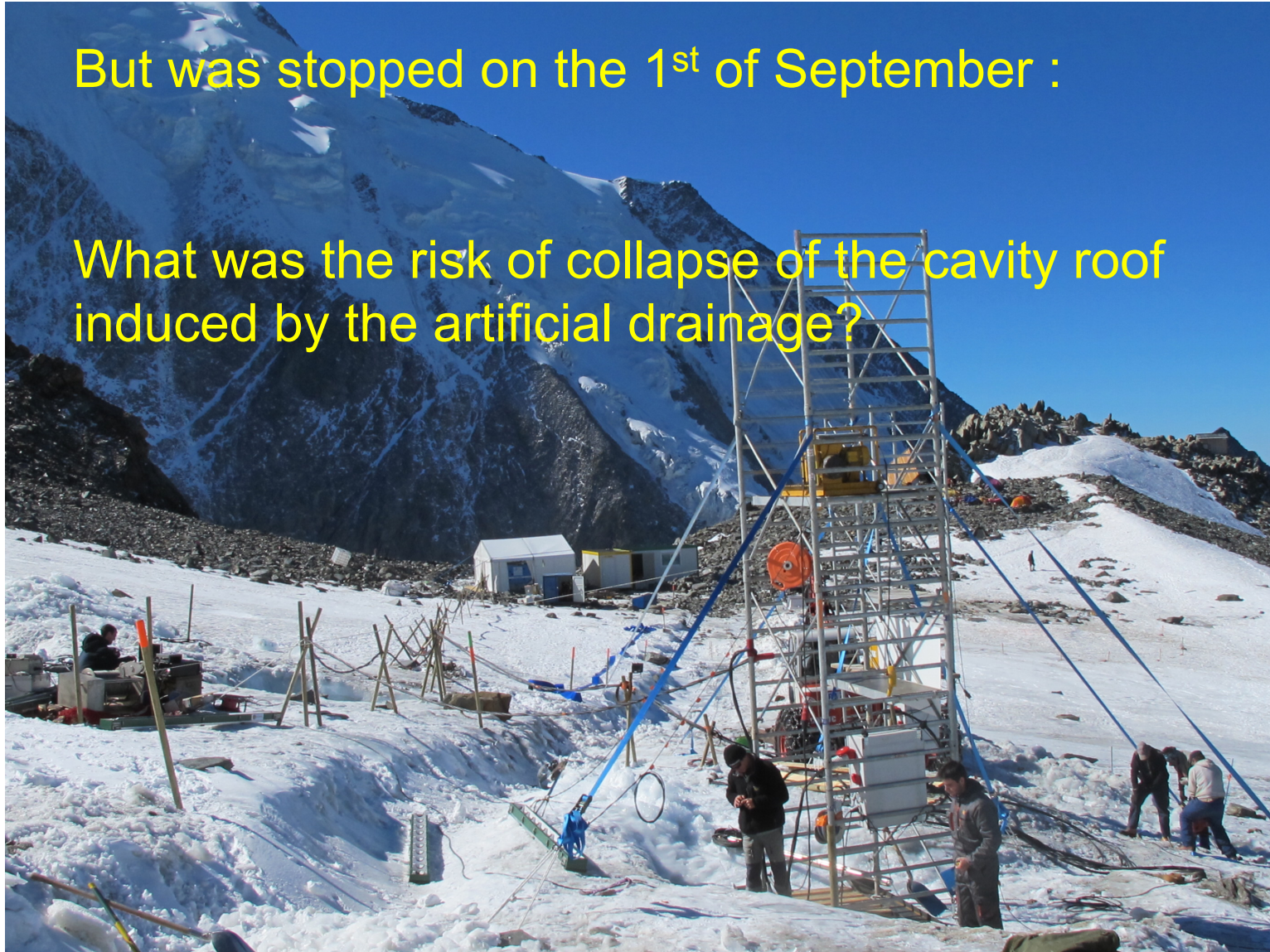


# A new risk ?

---

But was stopped on the 1<sup>st</sup> of September :

What was the risk of collapse of the cavity roof induced by the artificial drainage?

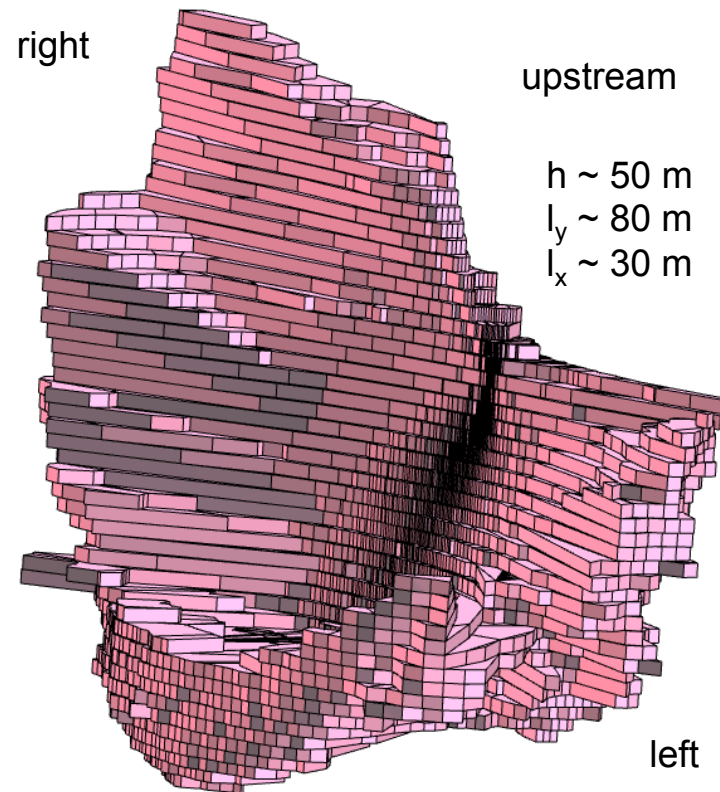


# The 2010 cavity

Pumping of 47 700 m<sup>3</sup> from 25 August to 8 October 2010

**Question** (addressed end of August 2010):

What is the risk of break-up during the pumping phase?



# Time-line for investigations

Sonar data

Septembre

D	L	M	E	J	V	S
			1	2	3	4
5	6	7	8	9	10	11
12	13	14	15	16	17	18
19	20	21	22	23	24	25
26	27	28	29	30		

Meeting with the  
mayor of St  
Gervais

# Proposed application

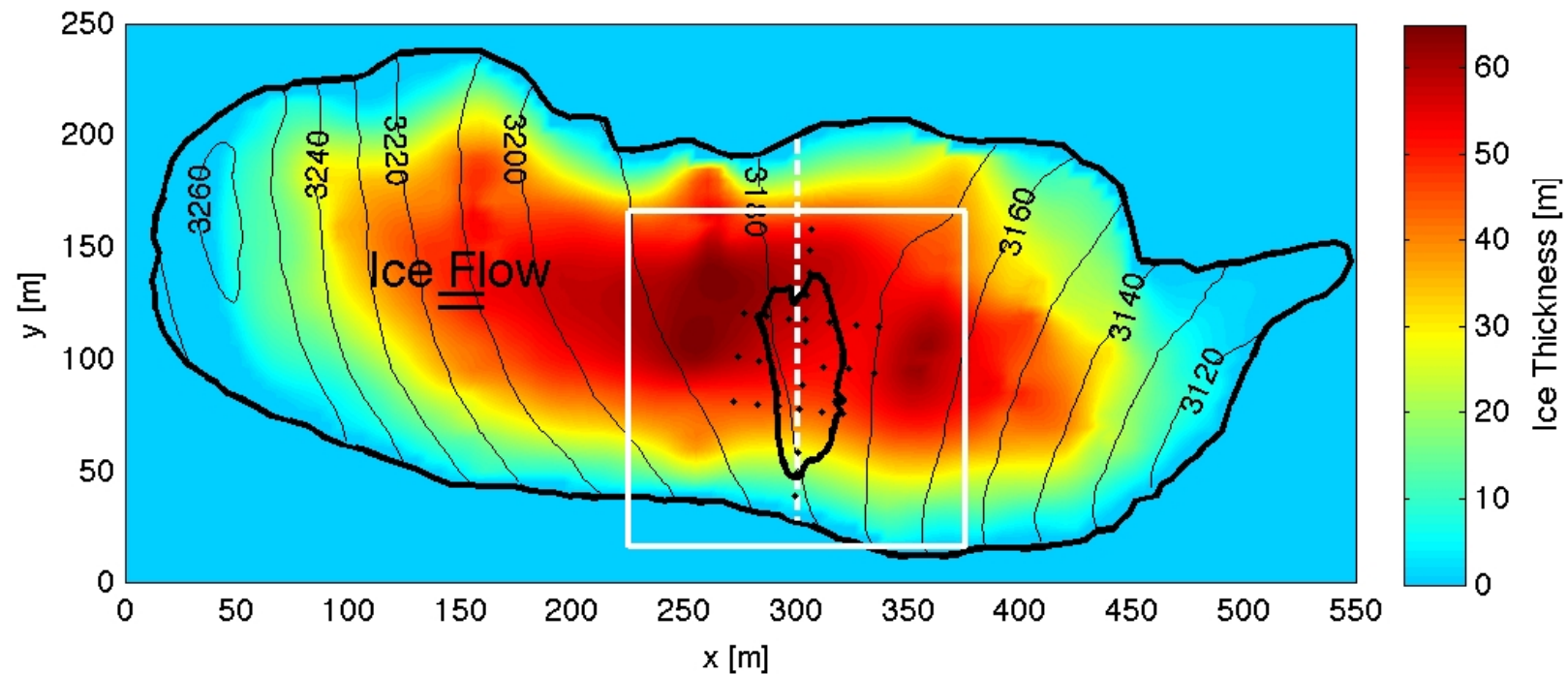
---

Construct a model of the flow of Tête Rousse Glacier

- Step 1: Without the cavity (normal state)
- Step 2: Add an empty cavity (stress analysis)
- Step 3: Rate of closure of the cavity  
(surface deformation analysis)

# Data for ice flow modelling

- Bedrock DEM
- 2007 Surface DEM
- Cavity topography from sonar measurements
- Few surface velocities, without the empty cavity (0.6 m/a at the centre of the glacier)
- 27 Stakes to measure surface displacement during drainage



# Material:

---

**Data:** Contour\_TR\_cavity.dat, Contour\_TR\_glacier.dat, DEM\_TR\_bed.dat, DEM\_TR\_cavity.dat, DEM\_TR\_surf.dat

**PROG:** USF\_TR.f90

**Step1:** Makegeo.m, teterousse.geo, teterousse1.sif

**Step2a:** Makegeo\_2.m, teterousse.geo, teterousse2a.sif

**Step2b:** teterousse2b.sif

**Step3a:** teterousse3a.sif

**Step3b:** teterousse3b.sif

# Modelling Tête Rouse Glacier

---

✓ **Step 1** - Tête Rouse Glacier flow without a water filled-cavity (diagnostic)

✓ **Step 2**

- 2a Influence of an empty cavity below Tête Rouse Glacier (diagnostic)
- 2b Apply a water pressure in the cavity

✓ **Step 3**

- 3a Rate of closure of the cavity for a given drainage scenario (prognostic)
- 3b Add a drainage scenario

# Step 1: Work to do

---

- create the mesh
- impose the boundary conditions in the SIF file
- test other BCs on the lateral boundary
- test sliding at the base of the glacier



# Step 1: steps to make the mesh

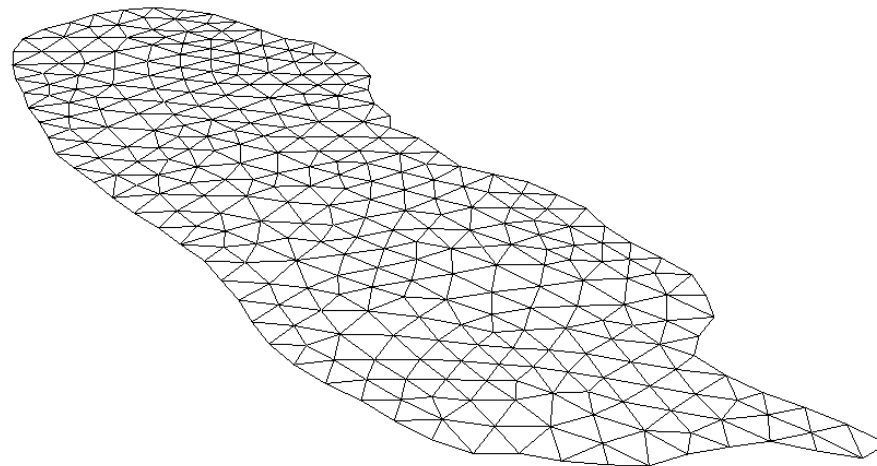
---

1/ build the `teterousse.geo` file (input file of gmsch, footprint of the glacier)

2/ `gmsch` to get `teterousse.msh` (still footprint of the glacier)

3/ `ElmerGrid` to transform into Elmer format (still footprint of the glacier)

4/ we will use the internal extrusion feature in Elmer to create a volume from this footprint (see the `sif` file)



# Step 1: Makegeo.m (create a .geo file)

---

```
clear;
lc_out=18.0;           (size of the element in the plane)

A=dlmread('Contour_TR_glacier.dat');   (Read contour points)
fid1=fopen('teterousse.geo','w');
fprintf(fid1,'Mesh.Algorithm=5; \n');   (delaunay algorithm)

As=size(A,1);

np=0;
for ii=1:As
    np=np+1;
    fprintf(fid1,'Point(%g)={%14.7e,%14.7e,0.0,%g}; \n',np,A(ii,1),A(ii,2),lc_out);
end

fprintf(fid1,'Spline(1)={');
for ii=1:As
    fprintf(fid1,'%g,',ii);
end
fprintf(fid1,'%g}; \n',1);

fprintf(fid1,'Line Loop(2)={1}; \n');
fprintf(fid1,'Plane Surface(3) = {2}; \n');
fprintf(fid1,'Physical Line(4) = {1}; \n');
fprintf(fid1,'Physical Surface(5) = {3}; \n');

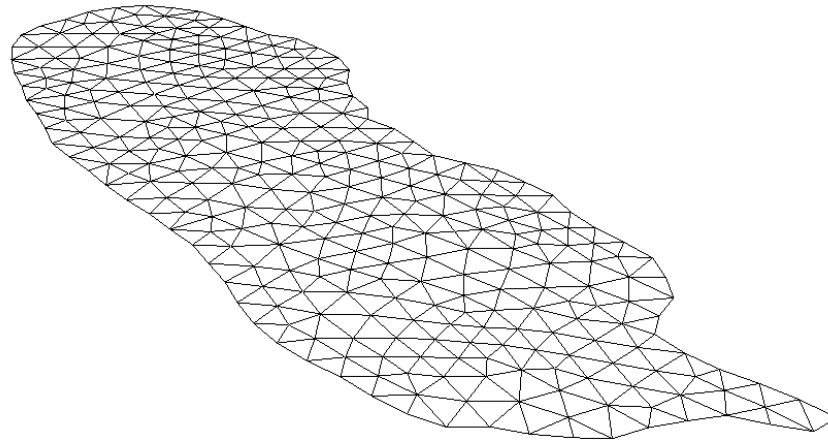
fclose(fid1)
```

# Step 1a: Makegeo.m

---

```
% create teterousse.msh using gmesh
system "gmsh teterousse.geo -1 -2"

% convert teterousse.gmsh in an Elmer type mesh
System "ElmerGrid 14 2 teterousse.msh -autoclean"
```



# Step 1: **gmsh** (create a .msh file)

---

```
gmsh teterousse.geo -1 -2
```

help: <http://www.geuz.org/gmsh/>

line commands:

"-1 -2" performs 1D and 2D mesh generation and then exit

# Step 1: In the sif file

---

Define the number of vertical layers (Simulation section):

```
Simulation
  Coordinate System = Cartesian 3D
  Simulation Type = Steady

  Extruded Mesh Levels = Integer 16

  ...
End
```

The second solver to be executed is the StructuredMeshMapper

```
Solver 2
  Equation = "MapCoordinate"
  Procedure = "StructuredMeshMapper" "StructuredMeshMapper"
  Active Coordinate = Integer 3           (3d problem - mesh moves in z direction)
  Mesh Velocity Variable = String "dSdt"
  Mesh Update Variable = String "dS"
  Mesh Velocity First Zero = Logical True
  Displacement Mode = Logical False
  Correct Surface = Logical True
  Minimum Height = Real 1.0
End
```

}  $z_s = \min(z_s, \text{bed} + 1.0)$

# Step 1: In the sif file

Read, interpolate and store in 2 variables the bed and surface DEM

Solver 1

```
Exec Solver = "Before Simulation"
```

```
Equation = "Read DEMs"
```

```
Procedure = "ElmerIceSolvers" "Grid2DInterpolator"
```

```
! Bedrock DEM
```

```
Variable 1 = String "bedDEM"
```

```
Variable 1 data file = File "../Data/DEM_TR_bed.dat" name of the DEM file
```

```
Variable 1 x0 = Real 947700.0d0
```

```
Variable 1 y0 = Real 2104850.0d0
```

```
Variable 1 lx = Real 600.0
```

```
Variable 1 ly = Real 350.0
```

```
Variable 1 Nx = Integer 301
```

```
Variable 1 Ny = Integer 176
```

```
Variable 1 Invert = Logical False
```

```
Variable 1 Fill = Logical False
```

```
Variable 1 Position Tol = Real 1.0e-1
```

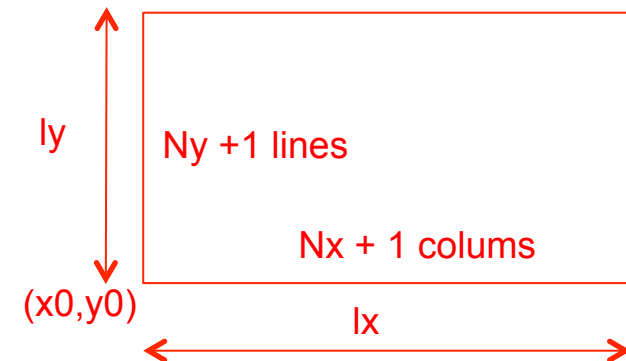
```
Variable 1 No Data = Real -9999.0
```

```
Variable 1 No Data Tol = Real 1.0
```

```
! Surface DEM ...
```

```
End
```

define the DEM file structure



# Step 1: In the sif

---

BedDEM and ZsDEM (variable) must be declared in one solver (Stokes for example)

```
Exported Variable 3 = -dofs 1 "BedDEM"
```

```
Exported Variable 4 = -dofs 1 "ZsDEM"
```

Keywords Bottom Surface and Top Surface (needed by the solver StructuredMeshMapper) are assigned the value of these two variables

```
!Bed rock BC
```

```
Boundary Condition 2
```

```
  Bottom Surface = Equals "BedDEM"
```

```
...
```

```
End
```

```
! Upper Surface BC
```

```
Boundary Condition 3
```

```
  Top Surface = Equals "ZsDEM"
```

```
End
```

# Step 1: use Glen's law

$$D_{ij} = A \tau_e^{n-1} S_{ij} \quad ; \quad S_{ij} = A^{-1/n} I_{D_2}^{(1-n)/n} D_{ij}$$

$$A = A(T') = A_0 \exp^{-Q/RT'}$$

$$A = A_1 = 2.89 \times 10^{-13} \text{ s}^{-1} \text{ Pa}^{-3} \text{ if } T \leq -10^\circ\text{C}$$

$$A = A_2 = 2.43 \times 10^{-2} \text{ s}^{-1} \text{ Pa}^{-3} \text{ if } T \geq -10^\circ\text{C}$$

$$Q = Q_1 = 60 \text{ kJ mol}^{-1} \text{ if } T \leq -10^\circ\text{C}$$

$$Q = Q_2 = 115 \text{ kJ mol}^{-1} \text{ if } T \geq -10^\circ\text{C}$$

Cuffey and Paterson (2010)

assume a constant temperature of  $-1^\circ\text{C}$

Paterson 2010		
A*	3.50000E-25	s <sup>-1</sup> Pa <sup>-3</sup>
A1	2.89165E-13	s <sup>-1</sup> Pa <sup>-3</sup>
A2	2.42736E-02	s <sup>-1</sup> Pa <sup>-3</sup>
Q1	60000	J/mol
Q2	115000	J/mol
T [°C]	A [s <sup>-1</sup> Pa <sup>-3</sup> ]	A [a <sup>-1</sup> MPa <sup>-3</sup> ]
0	2.4029E-24	75.830
-1	1.9945E-24	62.942
-2	1.6533E-24	52.173
-3	1.3685E-24	43.186
-4	1.1312E-24	35.698
-5	9.3370E-25	29.465
-6	7.6958E-25	24.286
-7	6.3339E-25	19.988
-8	5.2054E-25	16.427
-9	4.2716E-25	13.480
-10	3.5000E-25	11.045
-10	3.5000E-25	11.045
-11	3.1520E-25	9.947
-12	2.8363E-25	8.951
-13	2.5501E-25	8.048
-14	2.2910E-25	7.230
-15	2.0564E-25	6.490
-16	1.8444E-25	5.820
-17	1.6528E-25	5.216
-18	1.4798E-25	4.670
-19	1.3238E-25	4.177
-20	1.1831E-25	3.734
-21	1.0565E-25	3.334
-22	9.4260E-26	2.975
-23	8.4019E-26	2.651
-24	7.4822E-26	2.361
-25	6.6570E-26	2.101
-30	3.6580E-26	1.154
-35	1.9601E-26	0.619
-40	1.0225E-26	0.323
-45	5.1843E-27	0.164
-50	2.5496E-27	0.080



# Step 1: use Glen's law

```
$yearinsec = 365.25*24*60*60
$rhoi = 900.0/(1.0e6*yearinsec^2)
$rhow = 1000.0/(1.0e6*yearinsec^2)
$gravity = -9.81*yearinsec^2
! Prefactor from Cuffey&Paterson (2010) in MPa{-3} a{-1}
$A1 = 2.89165e-13*yearinsec*1.0e18
$A2 = 2.42736e-2*yearinsec*1.0e18
$Q1 = 60.0e3
$Q2 = 115.0e3
```

$s^{-1} Pa^{-3} \Rightarrow a^{-1} MPa^{-3}$

```
Material 1
  Density = Real $rhoi
  Viscosity Model = String "glen"
  Viscosity = 1.0 ! Dummy but avoid warning output
  Glen Exponent = Real 3.0
  Limit Temperature = Real -10.0
  Rate Factor 1 = Real $A1
  Rate Factor 2 = Real $A2
  Activation Energy 1 = Real $Q1
  Activation Energy 2 = Real $Q2
  Glen Enhancement Factor = Real 1.0
  Critical Shear Rate = Real 1.0e-10

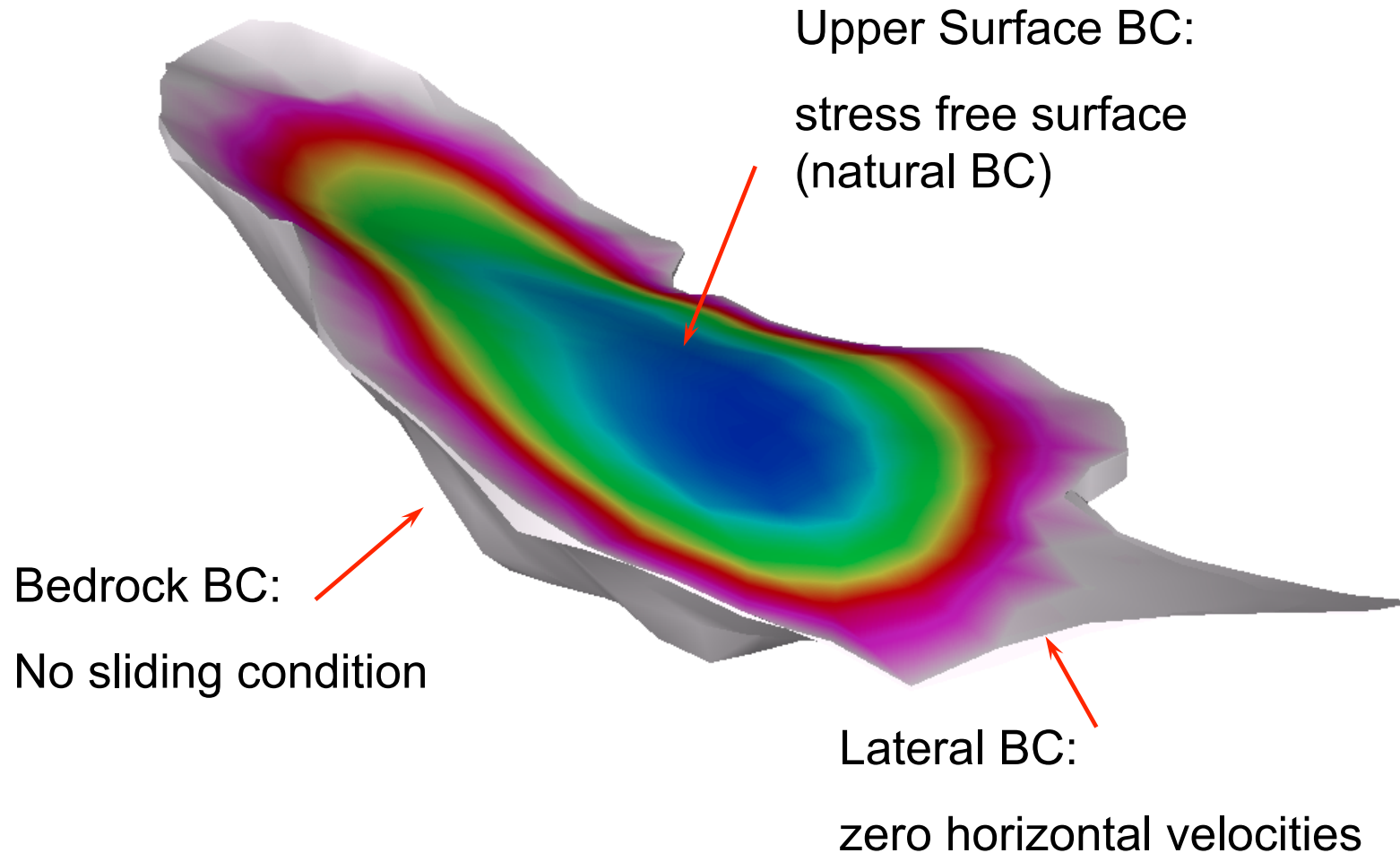
  Constant Temperature = Real -1.0
End
```

# Step 1: Hypothesis of the modelling

---

Solve only the Stokes equation in a diagnostic way

3 boundary conditions



# Step 1: Boundary Conditions

---

```
! lateral side of the glacier
```

```
Boundary Condition 1
```

```
Target Boundaries = 1
```

```
Velocity 1 = real 0.0
```

```
Velocity 2 = real 0.0
```

**Null horizontal velocities**

```
End
```

```
! Bedrock
```

```
Boundary Condition 2
```

```
Bottom Surface = Equals BedDEM
```

```
Velocity 1 = Real 0.0
```

```
Velocity 2 = Real 0.0
```

```
Velocity 3 = Real 0.0
```

**No sliding**

```
End
```

```
! Upper Surface
```

```
Boundary Condition 3
```

```
Top Surface = Equals ZsDEM
```

**Natural BC,  
nothing to do!**

```
End
```

# Step 1: Stress Solver

---

Objective: compute the stress field as

$$\int_V S_{ij} \Phi \, dV = 2 \int_V \eta D_{ij} \Phi \, dV$$

where  $D_{ij}$  and  $\eta$  are calculated from the nodal velocities using the derivative of the basis functions

Solver 4

Equation = Sij

Procedure = "ElmerIceSolvers" "ComputeDevStress"

Variable = -nooutput "Sij"

Variable DOFs = 1

Exported Variable 1 = Stress

Exported Variable 1 DOFs = 6

Flow Solver Name = String "Flow Solution"

Linear System Solver = Direct

Linear System Direct Method = umfpack

End

# Step 1: Stress Solver

---

- Tell you want the Cauchy stress to be computed (Material Section)  
(else you will get the deviatoric stress)

```
Material 1  
  Cauchy Stress = Logical True  
End
```

- Output :        negative stress = Compressive stress  
                  positive stress = Tensile stress

Stress.1	→	$S_{xx}$	Stress.4	→	$S_{xy}$
Stress.2	→	$S_{yy}$	Stress.5	→	$S_{yz}$
Stress.3	→	$S_{zz}$	Stress.6	→	$S_{xz}$

# Step 1: Eigenvalues Solver

---

Objective: compute the eigenvalues of the Cauchy stress tensor

```
Solver 5
```

```
Equation = "EigenStresses"
```

```
Procedure = "ElmerIceSolvers" "ComputeEigenValues"
```

```
Variable = -nooutput dummy
```

```
Variable DOFs = 1
```

```
! The 3 eigenvalues
```

```
Exported Variable 1 = EigenStress
```

```
Exported Variable 1 DOFS = 3
```

```
! The 3 eigenvectors (Option)
```

```
Exported Variable 2 = EigenVector1
```

```
Exported Variable 2 DOFS = 3
```

```
Exported Variable 3 = EigenVector2
```

```
Exported Variable 3 DOFS = 3
```

```
Exported Variable 4 = EigenVector3
```

```
Exported Variable 4 DOFS = 3
```

```
End
```

# Step 1: Eigenvalues Solver

---

Output :            negative stress = Compressive stress  
                      positive stress = Tensile stress  
                      ordered  $\rightarrow$  Eigenstress.3 gives the maximal tensile stress

Eigenstress.1  $\rightarrow$   $S_1$   
Eigenstress.2  $\rightarrow$   $S_2$   
Eigenstress.3  $\rightarrow$   $S_3$

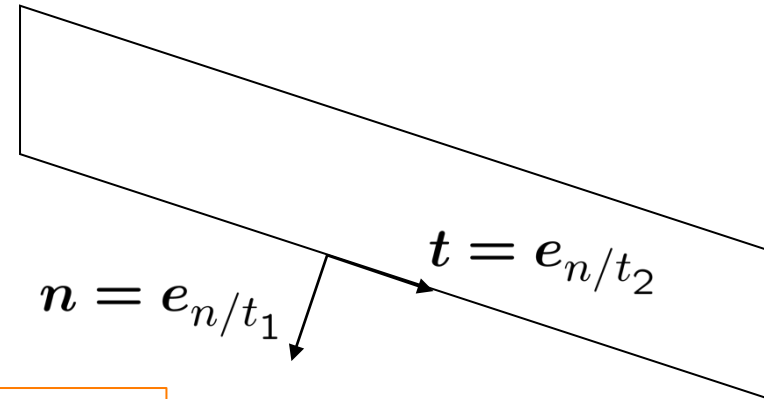
# Step 1: Add sliding on the bedrock

Friction law in Elmer:

$$C_i u_i = \sigma_{ij} n_j \quad (i = 1, 2)$$

→  $C_t u_t = \sigma_{nt} ; C_n u_n = \sigma_{nn}$

where  $n$  is the surface normal vector



```
! Bedrock BC
Boundary Condition 2
. . .

Flow Force BC = Logical True
Normal-Tangential Velocity = Logical True

Velocity 1 = Real 0.0e0
Slip Coefficient 2 = Real 0.1
Slip Coefficient 3 = Real 0.1
End
```

## How to evaluate the Slip Coefficient ?



# Step 1: Other BCs for the lateral boundary

---

```
! lateral side of the glacier  
Boundary Condition 1  
  Target Boundaries = 1  
End
```

Natural BC

```
! lateral side of the glacier  
Boundary Condition 1  
  Target Boundaries = 1  
  Velocity 1 = real 0.0  
  Velocity 2 = real 0.0  
  Velocity 3 = real 0.0  
End
```

zero velocity

Conclusion ?

# Modelling Tête Rousse Glacier

---

✓ **Step 1** - Tête Rousse Glacier flow without a water filled-cavity (diagnostic)

✓ **Step 2**

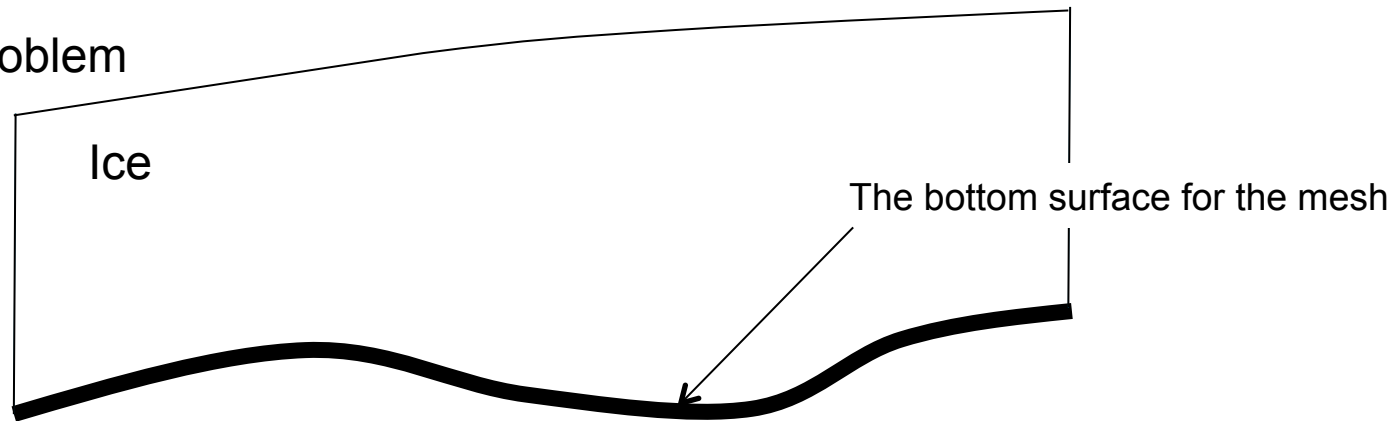
- 2a Influence of an empty cavity below Tête Rousse Glacier (diagnostic)
- 2b Apply a water pressure in the cavity

✓ **Step 3**

- 3a Rate of closure of the cavity for a given drainage scenario (prognostic)
- 3b Add a drainage scenario

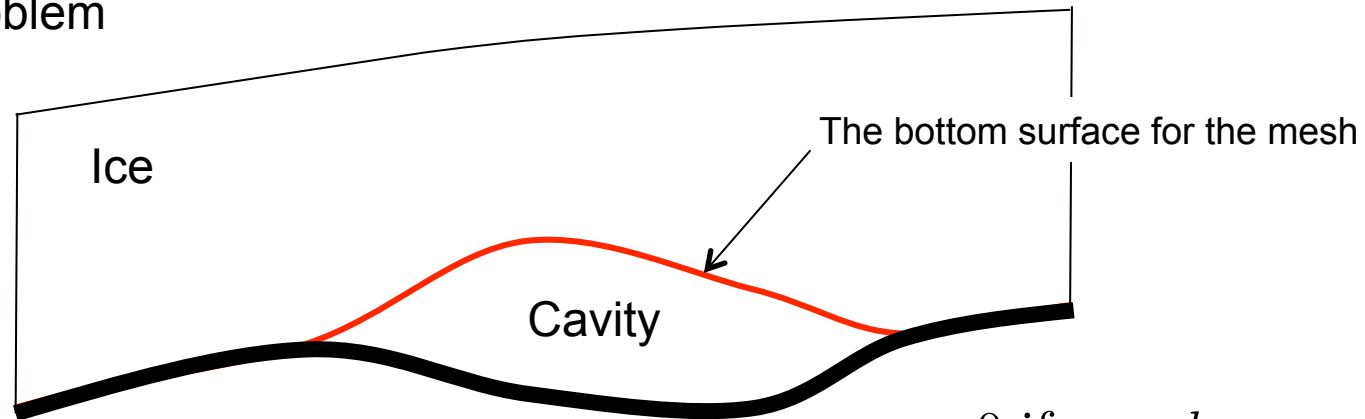
# Step 2a: Add the cavity (empty of water)

The initial problem



Only one BC for the base: no sliding

The new problem



!!! The ice bottom surface is not anymore given by the bedrock DEM !!!

Two BCs for the base:

$$\mathbf{u} = 0 \text{ if } z_b = b$$

$$\sigma_{nn} = p_w \text{ if } z_b > b$$

$$p_w = 0 \text{ if the cavity is empty of water}$$

# Step 2a: new Bottom Surface definition

---

The bottom surface is now given by the DEM\_TR\_cavity.dat DEM file.

Change the StructuredMeshMapper to read this DEM and store it in the ZbDEM variable

Declare this new variable (in Stokes solver section):

```
Exported Variable 5 = -dofs 1 "ZbDEM"
```

Change the boundary condition 2:

```
Boundary Condition 2
```

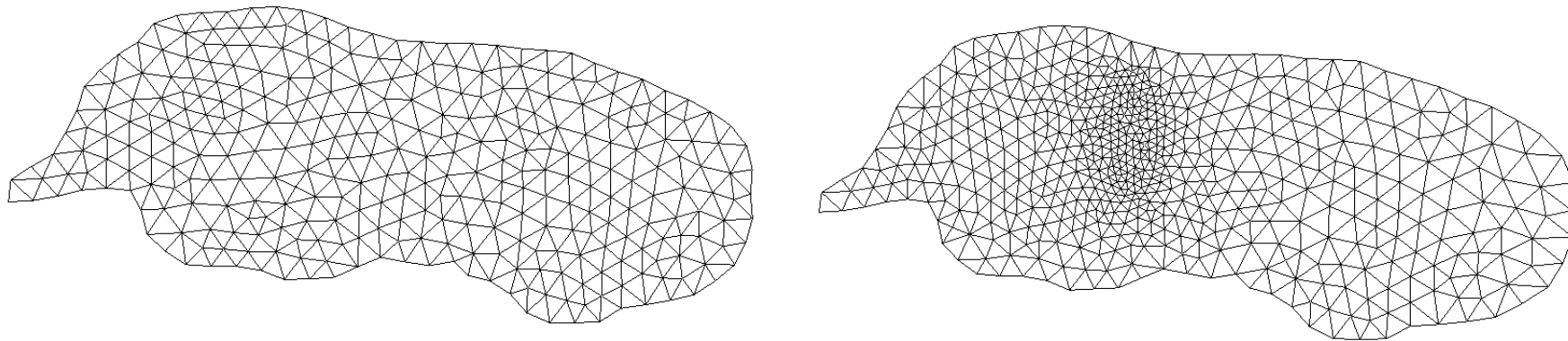
```
    Bottom Surface = Equals "ZbDEM"
```

```
End
```

# Step 2a: Make a new mesh

---

We will use the cavity contour to have smaller size elements in the vicinity of the cavity



**Work to do** : modify the `Makegeo.m` file to create this new mesh.

# Step 2a: Make a new mesh (Makegeo\_2.m) 1/2

---

```
clear;
lc_out=18.0;
lc_in=6.0;
A=dlmread('Contour_TR_glacier.dat');
B=dlmread('Contour_TR_cavity.dat');
fid1=fopen('teterousse.geo','w');
As=size(A,1);
Bs=size(B,1);
np=0;
for ii=1:As
    np=np+1;
    fprintf(fid1,'Point(%g)={%14.7e,%14.7e,0.0,%g}; \n',np,A(ii,1),A(ii,2),lc_out);
end
for ii=1:Bs
    np=np+1;
    fprintf(fid1,'Point(%g)={%14.7e,%14.7e,0.0,%g}; \n',np,B(ii,1),B(ii,2),lc_in);
end

fprintf(fid1,'Spline(1)={');
for ii=1:As
    fprintf(fid1,'%g,',ii);
end
fprintf(fid1,'%g}; \n',1);

fprintf(fid1,'Spline(2)={');
for ii=1:Bs
    fprintf(fid1,'%g,',As+ii);
end
fprintf(fid1,'%g}; \n',As+1);
```

# Step 2a: Make a new mesh (Makegeo\_2.m) 2/2

---

```
fprintf(fid1,'Line Loop(3)={1}; \n');
fprintf(fid1,'Line Loop(4) = {2}; \n');
fprintf(fid1,'Plane Surface(5) = {3, 4}; \n');
fprintf(fid1,'Plane Surface(6) = {4}; \n');
fprintf(fid1,'Physical Line(7) = {1}; \n');
fprintf(fid1,'Physical Surface(8) = {5,6}; \n');
fclose(fid1)

% create teterousse.msh using gmesh
system "gmsh teterousse.geo -1 -2"

% convert teterousse.gmesh in an Elmer type mesh
System "ElmerGrid 14 2 teterousse.msh -autoclean"
```

# Step 2a: Change in the basal BC

---

The basal BC will be of the form:

```
Velocity 1 = Real 0.0
```

```
Velocity 1 Condition = Variable zbDEM, BedDEM
```

```
Real MATC "-(tx(0) > tx(1))"
```

Velocity 1 Condition = 0 si  $z_bDEM > BedDEM$       => Don't apply "Velocity 1 = 0"  
= -1 si  $z_bDEM \leq BedDEM$       => Apply "Velocity 1 = 0"

And the same for Velocity 2 and Velocity 3.

Visualize the results in ElmerPost.

What does it change in term of velocity and stress?



# Step 2a: Change in the basal BC

---

2<sup>nd</sup> Solution – use a f90 user function instead of MATC language

The basal BC will be of the form:

```
Velocity 1 = Real 0.0
```

```
Velocity 1 Condition = Variable ZbDEM, BedDEM
```

```
Real Procedure "../PROG/USF_TR" "MaskCavity"
```

Compile the user function USF\_TR.f90 in PROG/

```
elmerf90 USF_TR.f90 -o USF_TR
```

Best solution for large problem:

a f90 user function is much faster than MATC coding in the sif!

# Step 2a: MaskCavity user function

---

```
FUNCTION MaskCavity ( Model, nodenumber, Input) RESULT(Mask)
  USE types
  USE CoordinateSystems
  USE SolverUtils
  USE ElementDescription
  USE DefUtils
  IMPLICIT NONE
  TYPE(Model_t) :: Model
  TYPE(Solver_t), TARGET :: Solver
  INTEGER :: nodenumber
  REAL(KIND=dp) :: Input(2), Mask
  REAL(KIND=dp) :: znode, zbed

  znode = Input(1)
  zbed = Input(2)

  IF (znode > zbed+0.1) THEN
    Mask = -1.0
  ELSE
    Mask = 1.0
  END IF
END FUNCTION MaskCavity
```

# Modelling Tête Rouse Glacier

---

✓ **Step 1** - Tête Rouse Glacier flow without a water filled-cavity (diagnostic)

✓ **Step 2**

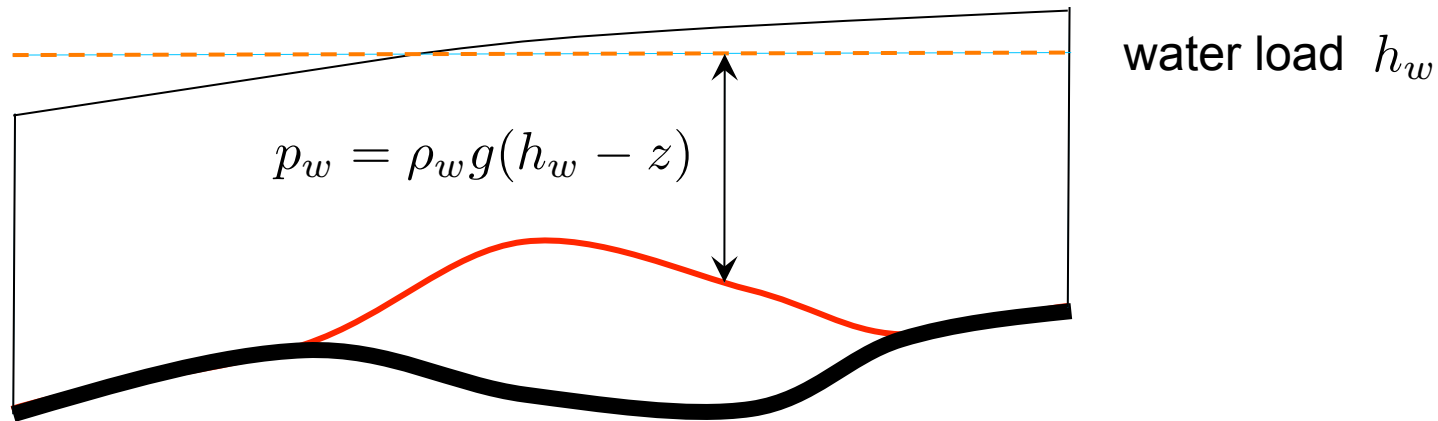
- 2a Influence of an empty cavity below Tête Rouse Glacier (diagnostic)
- 2b Apply a water pressure in the cavity

✓ **Step 3**

- 3a Rate of closure of the cavity for a given drainage scenario (prognostic)
- 3b Add a drainage scenario

# Step 2b: Add a water pressure

Modify the SIF to add a water pressure



$h_w = 3176.0$

the water load

In the bedrock BC

Flow Force BC = Logical True

External Pressure = Variable Coordinate 3

Real MATC `"rho*gravity*(hw-tx)`

will only apply where a Dirichlet BC is not applied i.e. in the cavity

# Modelling Tête Rousse Glacier

---

✓ **Step 1** - Tête Rousse Glacier flow without a water filled-cavity (diagnostic)

✓ **Step 2**

- 2a Influence of an empty cavity below Tête Rousse Glacier (diagnostic)
- 2b Apply a water pressure in the cavity

✓ **Step 3**

- 3a Rate of closure of the cavity for a given drainage scenario (prognostic)
- 3b Add a drainage scenario

# Step 3a: Move to prognostic

---

Will do it in two steps

- Move to prognostic assuming the cavity is empty of water at  $t=0$   
(big step, need 2 new solvers!)
- Prescribe the observed drainage scenario for the water pressure

To move from a diagnostic to a prognostic simulations:

- Add the FreeSurface solver (here 2 times, since we have 2 FS)
- Add one body per FS (new Initial Condition and Equation Sections)
- Modifications in the Simulation and Boundary Condition Sections

Only shown for the upper free surface here

# Step 3a – Steady to transient

---

The simulation Section has to be modified:

Simulation Type = Transient

Timestepping Method = "bdf" → Backward Differences Formulae

BDF Order = 1

Output Intervals = 1

Timestep Intervals = 10

Timestep Sizes = \$10.0/365.25

Steady State Min Iterations = 1 → To control the "implicit" of the solution  
Steady State Max Iterations = 1 over one time step (here 1 means explicit)

Restart File = "../..//Step2a/teterousse/teterousse\_Step2a\_.result"

Restart Position = 0

Restart Time = Real 0.0

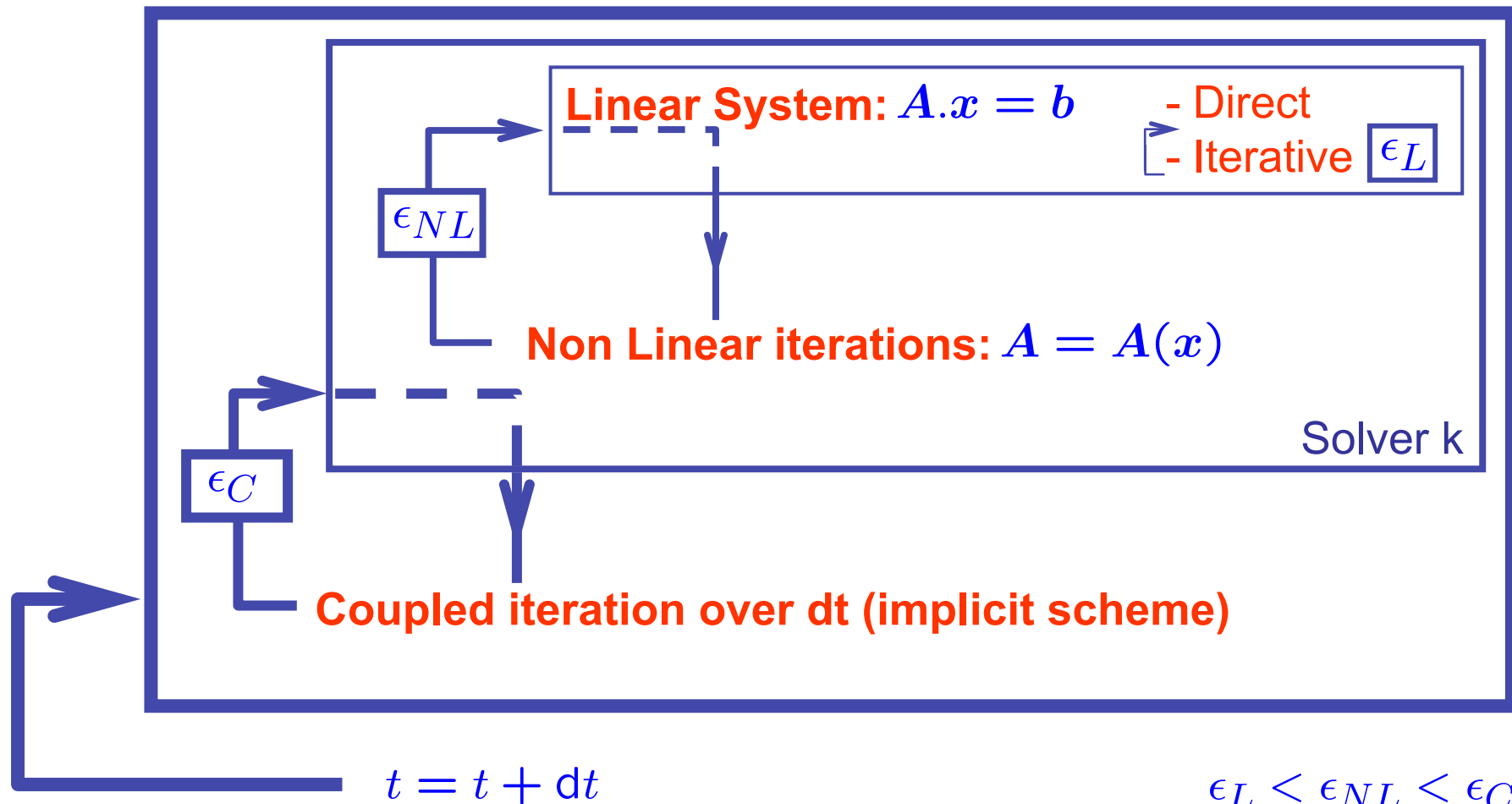
Restart Before Initial Conditions = Logical True

→ We need a restart to have the ZsDEM and ZbDEM variables for the initial condition of Zs and Zb

# Step 3a – Sketch of a transient simulation

Geometry + Mesh

→ Degrees of freedom





# Step 3a – Free surface Solver

---

The free surface solver only apply to the boundary 3 (upper surface)

➔ Define a 2nd body which is the boundary 3.

```
Body 2
  Equation = 2
  Body Force = 2
  Material = 1
  Initial Condition = 2
End
```

where Equation 2, Body Force 2 and Initial Condition 2 are defined for the free surface equation of the upper surface.

Tell in BC2 that this is the body 2:

```
Boundary Condition 3
  Body Id = 2
  ...
End
```

# Step 3a – Add the Free surface Solver

---

```
Solver 4
Equation = "Free Surface Top"
Variable = String "Zs"
Variable DOFs = 1
Exported Variable 1 = String "Zs Residual"
Exported Variable 1 DOFs = 1

Procedure = "FreeSurfaceSolver" "FreeSurfaceSolver"
Before Linsolve = "EliminateDirichlet" "EliminateDirichlet"

Linear System Solver = Iterative
Linear System Max Iterations = 1500
Linear System Iterative Method = BiCGStab
Linear System Preconditioning = ILU0
Linear System Convergence Tolerance = Real 1.0e-9
Linear System Abort Not Converged = False
Linear System Residual Output = 1

Nonlinear System Max Iterations = 100
Nonlinear System Convergence Tolerance = 1.0e-6
Nonlinear System Relaxation Factor = 1.00

Steady State Convergence Tolerance = 1.0e-03

Stabilization Method = Bubbles
Apply Dirichlet = Logical False

! How much the free surface is relaxed
Relaxation Factor = Real 1.00

! Is there a maximum step-size for the displacement
! use/or not accumulation
Use Accumulation = Logical True

! take accumulation to be given normal to surface/as vector
Normal Flux = Logical False
End
```

# Step 3a – Upper Surface

---

## Body Force 2:

```
Body Force 2
  Zs Accumulation Flux 1 = Real 0.0e0
  Zs Accumulation Flux 2 = Real 0.0e0
  Zs Accumulation Flux 3 = Real 0.0e0
End
```

## Equation 2:

```
Equation 2
  Active Solvers(1) = 2
  Flow Solution Name = String "Flow Solution"
  Convection = String Computed
End
```

## Initial Condition 2: (tell that $z_s(x, 0)$ is given by the surface DEM)

```
Initial Condition 2
  Zs = Equals "ZsDEM"
End
```

# Step 3a - StructuredMeshMapper

---

We say in StructuredMeshMapper that the top (and bottom) surface is defined by the variable zs:

```
Solver 1
  Equation = "MapCoordinate"
  Procedure = "StructuredMeshMapper" "StructuredMeshMapper"

  Active Coordinate = Integer 3
  Mesh Velocity Variable = String "dSdt"
  Mesh Update Variable = String "dS"
  Mesh Velocity First Zero = Logical True

  Top Surface Variable Name = String "Zs"
  Bottom Surface Variable Name = String "Zb"

End
```

And delete from the BC the initial definition of the top (and bottom) surface:

```
Boundary Condition 3
!!! this BC is equal to body no. 2 !!!
  Body Id = 2
```

```
Top Surface = Equals "ZsDEM"
```

```
End
```

# Step 3a – Same for the bedrock

---

Name of the variable: `Zs Bottom`

Add solver : `Solver 5`

Add equation: `Equation 3`

Modify the the Bottom surface BC (3):

```
Boundary Condition 2
```

```
  Body Id = 3
```

```
  Bottom Surface = Equals ZbDEM
```

```
End
```

Add a limiter to ensure that  $z_b \geq b$

In the material section

```
Min Zb = Equals "BedDEM"
```

```
Max Zb = Real +1.0e10
```

+ in the Free Surface solver : `Apply Dirichlet = Logical True`

# Step 3a – Newton linearization

---

If you want to use Newton linearization for the non-linear iterations, don't forget to reset the conditions used to move from Picard to Newton at each time step, by adding:

```
Solver 1
```

```
    Nonlinear System Reset Newton = Logical True
```

```
End
```

# Step 3a – Two subtleties...

---

## 1/ Need of the restart...

Initial conditions are set before the first solver is executed  
Impossible then to initialize with an other variable  
This is then done by using a restart and specifying:

```
Restart Before Initial Conditions = Logical True
```

## 2/ Problem when a solver is called two time in the same sif...

Need to make a copy of the object file to avoid mixing of the saved variables in the solver from two different calls:

```
cp $ELMER_HOME/share/elmersolver/lib/FreeSurfaceSolver.so  
MyFreeSurfaceSolver
```

Use a different call in the sif file for Zb:

```
Procedure = "./MyFreeSurfaceSolver" "FreeSurfaceSolver"
```

# Modelling Tête Rouse Glacier

---

✓ **Step 1** - Tête Rouse Glacier flow without a water filled-cavity (diagnostic)

✓ **Step 2**

- 2a Influence of an empty cavity below Tête Rouse Glacier (diagnostic)
- 2b Apply a water pressure in the cavity

✓ **Step 3**

- 3a Rate of closure of the cavity for a given drainage scenario (prognostic)
- 3b Add a drainage scenario



# Step 3b – Add a drainage scenario

---

Add an evolution of the water load of the linear form:

$$h_w = 3170.0 - t * \Delta h_w / \Delta t$$

## Work to do:

write a MATC function hw to prescribe the water load evolution

# Step 3b – Add a drainage scenario

---

MATC function  $h_w$  to prescribe the water load evolution:

```
! Water load function of time (in year)
! Decrease by DH in DT and h > 3100.0
$ function hw(t) {\
  DH = 70.0;\
  DT = 20.0;\
  h = 3170.0 - t*365.25*DH/DT ;\
  if (h > 3100.0) {\
    _hw = h ;\
  } else {\
    _hw = 3100.0 ;\
  }\
}
```

Call in the bedrock BC

```
External Pressure = Variable time, Coordinate 3
Real MATC "rho*gravity*(hw(tx(0))-tx(1))"
```

# More Steps ???

---

Some ideas:

- go parallel
- add the Savedata solver to get upper and/or lower surfaces ASCII output

- add the StructuredProjectToPlane solver

```
Solver 2
```

```
Equation = "HeightDepth"
```

```
Procedure = "StructuredProjectToPlane" "StructuredProjectToPlane"
```

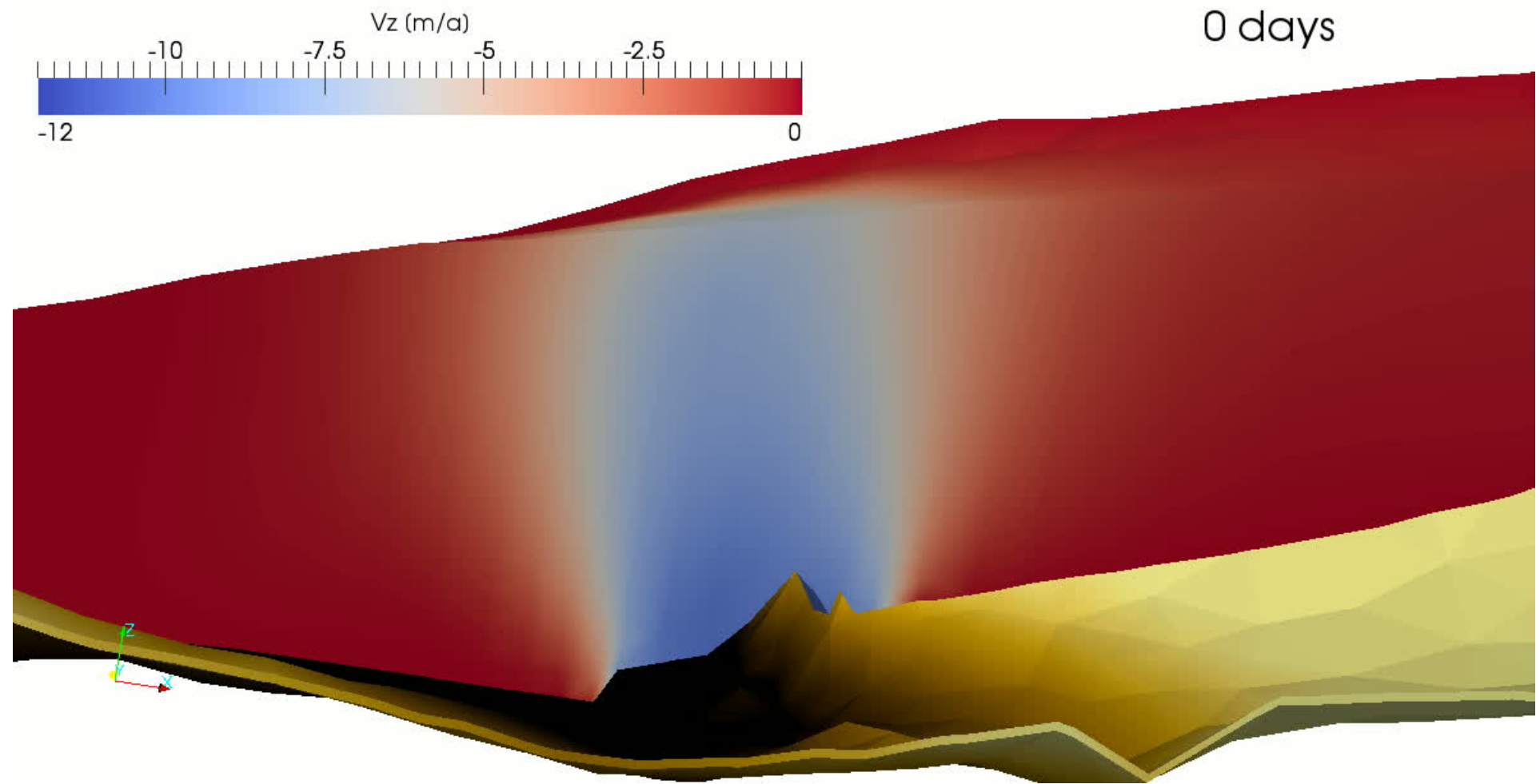
```
Active Coordinate = Integer 3
```

```
Operator 1 = depth
```

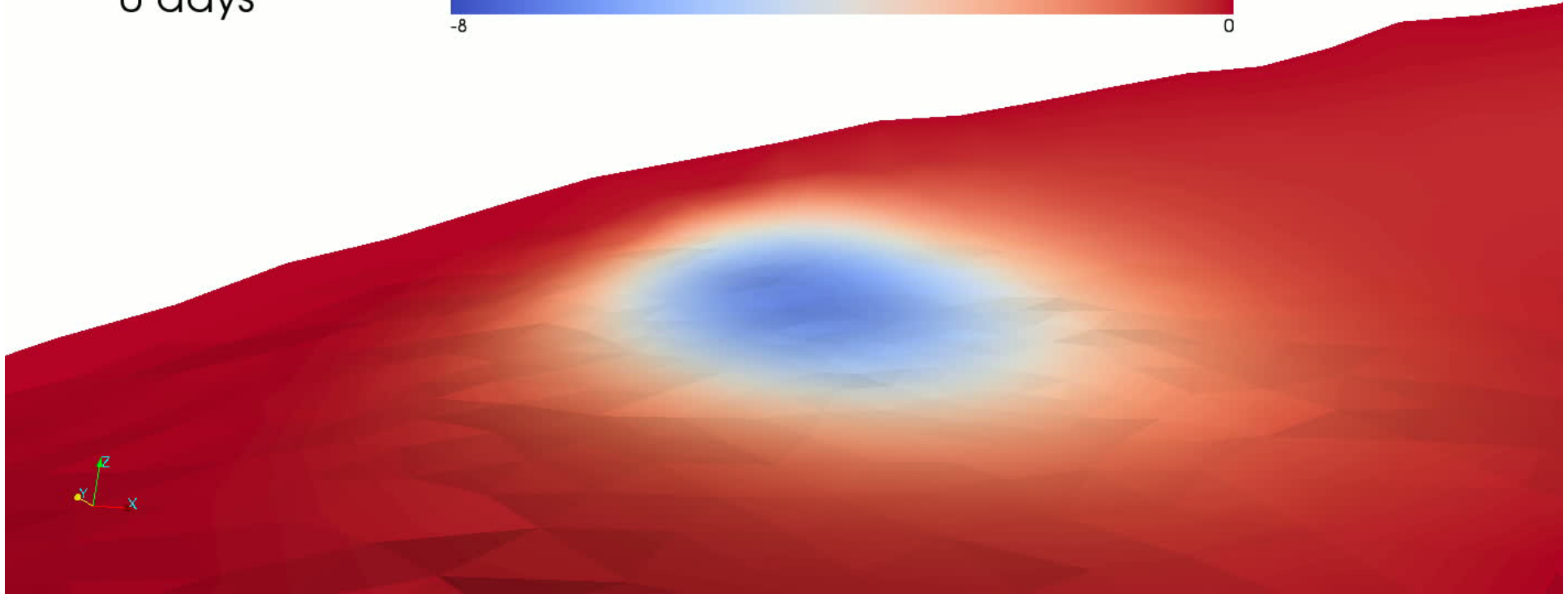
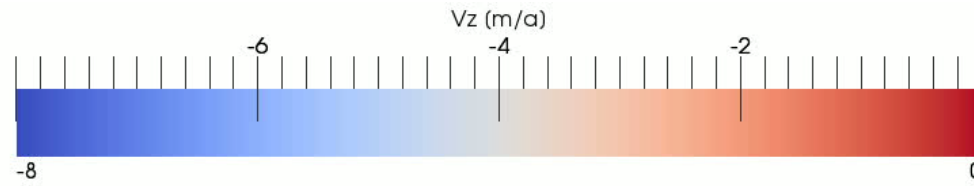
```
Operator 2 = height
```

```
End
```

- write a f90 user function to give the water pressure as a function of time (Step3b)  
For the 2 last points, see Step3c



0 days



# References

---

Gagliardini O., F. Gillet-Chaulet, G. Durand, C. Vincent and P. Duval, 2011. Estimating the risk of glacier cavity collapse during artificial drainage: the case of Tête Rousse Glacier. *Geophys. Res. Lett.*, 38, L10505, doi:10.1029/2011GL047536.